



Build With Purpose



PRIER PRODUCTS 2023
QUICK REFERENCE & PRODUCT LISTING



**WE STRIVE TO BE
OUR CUSTOMERS
BEST SUPPLIER**

No minimum orders. No return fees. No fuss. Whether you need a hydrant that's 10 inches or 10 feet, we'll make it to your specifications and ship it fast. Learn what makes PRIER Products different at [prier.com/buildwithpurpose](https://www.prier.com/buildwithpurpose).

COMMERCIAL | RESIDENTIAL | ANGLE SILL | PLUMBING BRASS | GROUND | DRAINAGE | SPECIALTY



Build With Purpose



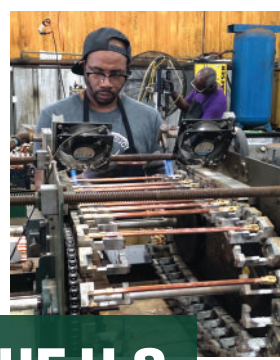
ATTENTION TO DETAIL



IF YOU'RE GOING TO BUILD SOMETHING **BUILD WITH PURPOSE**



CENTER OF THE U.S.



WIRED TO SERVE



LIVE SUPPORT



TABLE OF CONTENTS

Residential 06

C-434 | P-164 | P-15408
 C-144 | 400 Series | 408 Series09
 300 Series | C-134 | C-108SH1 | C-10810
 P-118 | P-114 | P-6IV | P-WMB111
 C-234 | C-244 | P-254 | P-264 | C-20812

Ground 19

P-260 | P-360 | P-650 | YH | C-240 | C-25019

Plumbing Brass 23

Lead-Free Small Valves23
 33 Series | 44 Series | 533 Series24
 34 Series | 526 Series25

Specialty Valves 29

Rep Map 35

Commercial 13

P-623 | P-62814
 C-633 | C-63415
 P-754 | C-53416
 P-RMB | P-RH1 | P-RH2 | P-RH3 | P-RH418

Angle Sill Faucets 20

P-156 | Vacuum Breakers 20
 C-155 | C-255 | C-355 21
 C-158 | C-258 | C-135 | C-235 22

Drainage 26

Replacements & Kits 30

CREATING YOUR PRODUCT NUMBER

OPTION 1 HYDRANT STYLE + INLET STYLE CODE + LENGTH CODE = PRODUCT NUMBER
 P-164 + D + 20 = P-164D20

OPTION 2 INLET STYLE PREFIX WITHOUT LETTER + LENGTH CODE = PRODUCT NUMBER
 478 + 12 = 478-12

INLET STYLE CODES



D Style
 1/2" MPT x 1/2" SWT



T Style
 3/4" MPT x 1/2" FPT



X Style
 1/2" Crimp PEX



W Style
 1/2" Expansion PEX



G Style
 1/2" SharkBite Push-Fit



C Style
 1/2" CPVC Glue-In



FX Style
 3/4" Crimp PEX



FW Style
 3/4" Expansion PEX



F Style
 3/4" SWT



Y Style
 1/2" Press-Fit

FAQS

Can I save money by buying in bulk?

Some hydrants are available to buy bulk in quantities of 24; look for the bulk packaging icon. With bulk pricing, deduct \$0.50 per unit price from list price. Add -BULK to the end of the part number to order in bulk quantity.

How do I measure stem length?

Measure overall stem length from brass tip to brass tip. See photo below for example. For spring-loaded stems, measure with the spring expanded out.



How do I convert a handle to loose key?

There are kits available which convert between loose key to handle and vice versa - See Replacement Parts on page 34.

Special Pricing

ADD TO END OF PART NO.	FEATURE	DESCRIPTION	ADD TO LIST
-SPF	Custom Finish	P-164, C-144, P-154, C-434, C-134, P-114, P-118, C-634, C-534, C-155/255/355, C-135/235	\$367.50
-SPF	Custom Finish	C-108	\$472.50
-SGH	Soft Grip Handle	C-144, P-154, C-134, C-135	\$2.80
-BULK	Bulk	P-164, C-144, 400 Series, P-154, 408 Series, C-134, 300 Series, C-234, C-244, P-264	-\$0.50/unit

About Freezeproof Hydrants

Freezeproof hydrants help prevent your pipes from freezing as long as the valve is installed correctly and hoses, sprayers, timers and other connections have been removed during freezing temperatures to allow water to drain from the hydrant. PRIER wall hydrants are built with a drainage pitch to ensure water exits the hydrant.

Are there custom finishes available?

Custom finishes available for C-108, C-134, C-144, C-434, C-534, C-634, C-135, C-235, C-155, C-255, C-355 models & boxes, P-114, P-118, P-154 and P-164. Custom finish orders cannot be canceled or returned.

Are there custom lengths available?

Custom lengths available - consult PRIER customer service for more information.

Call 800-362-9055 for live support!
Or email us at orders@prier.com

ICONS



Our products are designed to meet the high standards of the American Society of Sanitary Engineers (ASSE).



Our products are designed to meet the high standards of the Uniform Plumbing Code established by the International Association of Plumbing and Mechanical Officials.



Our hydrants have quarter-, half- and full-turn designs. Look for this symbol.



Our C-108, C-208, P-118 and P-754 offer hot and cold tempered water.



The Diamond Series offers a three-year limited product warranty.



Some of our hydrants offer the ability to convert to a loose key for added security.



Save money by buying in bulk on select items. Orders must be in multiples of 24.



Less than 0.25% lead for combined wetted surface area of a hydrant.

Follow PRIER on social media



Visit PRIER.COM for the list price sheet, digital catalog, spec sheets, submittal forms, IOMs and other resources. Call **800-362-9055** for live support!

RESIDENTIAL

PRODUCT SPOTLIGHT



C-434

Self-Draining with Hose Attached
Easy Installation
Full-Turn Soft-Grip
Patent Protected
Cycle Tested to 5000 Turns



TrueTemp P-118

Hot & Cold Mixing
Half-Turn Ergonomic Grip
Unique Patented Design
Single Control Temperature Dial
Cold Only P-114 CoolTemp Available

P-164

Starting at \$61.16

Quarter-Turn
Ergonomic Soft-Grip Handle
Loose Key Convertible
Anti-Siphon Vacuum Breaker
Enclosed Screw Holes



C-144

Starting at \$55.60

Full-Turn
Die-cast Aluminum Handle
Loose Key Convertible
Anti-Siphon Vacuum Breaker
Enclosed Screw Holes



400 Series

Starting at \$43.78

Half-Turn
Polycarbonate Handle
Anti-Siphon Vacuum Breaker
Wide Screw Holes





C-434 SELF-DRAINING WALL HYDRANT

Full-turn design with soft grip handle, the C-434 is perfect for people who leave their hose attached. For optional custom plating finish, see special pricing on page 5.



INLET STYLE CODE	CC 1 1/2"	04 4"	06 6"	08 8"	10 10"	12 12"	14 14"	16 16"	18 18"	20 20"	22 22"	24 24"
D, W, X	\$102.51	\$104.96	\$107.41	\$109.86	\$112.31	\$118.58	\$121.03	\$122.70	\$125.15	\$127.60	\$130.05	\$132.50
C, G, Y	\$140.09	\$143.11	\$146.14	\$149.16	\$152.19	\$159.92	\$162.95	\$165.01	\$168.04	\$171.06	\$174.08	\$177.11
T, F	\$109.28	\$111.86	\$114.44	\$117.02	\$119.60	\$126.20	\$128.79	\$130.55	\$133.13	\$135.71	\$138.29	\$140.87
FX, FW	\$126.61	\$129.64	\$132.66	\$135.69	\$138.71	\$146.45	\$149.47	\$151.53	\$154.56	\$157.58	\$160.61	\$163.63
Carton Qty. / Wgt.	6/11 lb	16/32 lb	16/34 lb	16/36 lb	16/39 lb	16/40 lb	16/42 lb	1/4 lb	1/4 lb	1/4 lb	1/5 lb	1/5 lb

*C-434 Series replacement parts and stems found on page 32.

P-164 QUARTER-TURN WALL HYDRANT

Easy open design with a soft-grip handle. Features traditional rising stem design for simple maintenance. For optional custom plating finish, see special pricing on page 5.



INLET STYLE CODE	CC 1 1/2"	04 4"	06 6"	08 8"	10 10"	12 12"	14 14"	16 16"	18 18"	20 20"	22 22"	24 24"
D, W, X	\$61.16	\$62.67	\$65.91	\$69.39	\$72.63	\$76.06	\$79.31	\$87.00	\$90.25	\$93.49	\$96.74	\$99.98
C, G, Y	\$74.02	\$79.48	\$82.87	\$86.51	\$89.91	\$93.51	\$96.91	\$104.97	\$108.37	\$111.77	\$115.16	\$118.56
T, F	\$70.70	\$71.97	\$75.55	\$79.39	\$82.97	\$86.76	\$90.35	\$98.85	\$102.43	\$106.02	\$109.60	\$113.18
FX, FW	\$69.73	\$71.06	\$74.64	\$78.48	\$82.06	\$85.85	\$89.44	\$97.94	\$101.52	\$105.11	\$108.69	\$112.28
Carton Qty. / Wgt.	6/8 lb	24/32 lb	24/34 lb	24/38 lb	24/41 lb	24/43 lb	24/47 lb	1/2 lb	1/2 lb	1/2 lb	1/3 lb	1/3 lb

*P-164 Series replacement parts and stems found on pages 30 & 31.

P-154 LEAD-FREE WALL HYDRANT

Lead-free hydrant with hose-threaded vacuum breaker. For optional custom plating finish or soft-grip handle, see special pricing on page 5.



INLET STYLE CODE	CC 1 1/2"	04 4"	06 6"	08 8"	10 10"	12 12"	14 14"	16 16"	18 18"	20 20"	22 22"	24 24"
D, W, X	\$63.15	\$67.30	\$69.88	\$72.65	\$75.23	\$77.96	\$80.54	\$86.68	\$89.26	\$91.84	\$94.42	\$97.00
C, G, Y	\$78.97	\$83.42	\$86.18	\$89.14	\$91.91	\$94.83	\$97.60	\$104.18	\$106.94	\$109.71	\$112.47	\$115.24
T, F	\$65.12	\$69.28	\$71.86	\$74.62	\$77.21	\$79.93	\$82.52	\$88.66	\$91.24	\$93.82	\$96.40	\$98.98
FX, FW	\$67.15	\$71.48	\$74.17	\$77.05	\$79.74	\$82.58	\$85.27	\$91.67	\$94.35	\$97.04	\$99.73	\$102.42
Carton Qty. / Wgt.	6/9 lb	24/34 lb	24/36 lb	24/40 lb	24/43 lb	24/45 lb	24/49 lb	1/3 lb	1/3 lb	1/3 lb	1/4 lb	1/4 lb

*P-154 Series replacement parts and stems found on pages 30 & 31.



C-144



400 SERIES



408 SERIES

C-144 FULL-TURN WALL HYDRANT

Features an anti-siphon vacuum breaker and backflow preventer. For optional custom plating finish or soft-grip handle, see special pricing on page 5.



INLET STYLE CODE	XC 1"	CC 1 1/2"	04 4"	06 6"	08 8"	10 10"	12 12"	14 14"	16 16"	18 18"	20 20"	22 22"	24 24"
D, W, X	\$43.89	\$55.60	\$56.97	\$59.92	\$63.08	\$66.03	\$69.15	\$72.10	\$79.09	\$82.04	\$84.99	\$87.94	\$90.89
C, G, Y		\$67.29	\$72.25	\$75.34	\$78.65	\$81.74	\$85.01	\$88.10	\$95.42	\$98.51	\$101.60	\$104.69	\$107.78
T, F	\$47.12	\$60.94	\$62.04	\$65.13	\$68.44	\$71.53	\$74.79	\$77.88	\$85.21	\$88.30	\$91.39	\$94.48	\$97.57
FX, FW		\$60.11	\$61.26	\$64.35	\$67.65	\$70.74	\$74.01	\$77.10	\$84.43	\$87.52	\$90.61	\$93.70	\$96.79
Carton Qty. / Wgt.	6/7 lb	6/7 lb	24/32 lb	24/34 lb	24/38 lb	24/41 lb	24/43 lb	24/47 lb	1/2 lb	1/2 lb	1/2 lb	1/3 lb	1/3 lb

*C-144 Series replacement parts and stems found on pages 30 & 31.

*The XC length is only available in the D, W, X and T style inlets.

400 SERIES HALF-TURN WALL HYDRANT

Satin nickel plated Mansfield style wall hydrant with grey handle. -LF at end of part number denotes lead-free hydrants. Add -B to the end of the part number for a beige handle.



INLET STYLE CODE	CC 1 1/2"	04 4"	06 6"	08 8"	10 10"	12 12"	14 14"
478-D, 490-X, 491-W	\$43.78	\$48.43	\$51.32	\$54.42	\$57.30	\$60.36	\$63.25
480-C, 483-G, 484-Y	\$60.95	\$66.06	\$69.23	\$72.63	\$75.81	\$79.16	\$82.33
479-T, 482-F	\$48.60	\$53.50	\$56.55	\$59.82	\$62.86	\$66.09	\$69.14
492-FX, 493-FW	\$46.86	\$51.73	\$54.76	\$58.00	\$61.02	\$64.22	\$67.24
LEAD FREE INLET STYLE CODE	CC 1 1/2"	04 4"	06 6"	08 8"	10 10"	12 12"	14 14"
478-D-LF, 490-X-LF, 491-W-LF	\$50.35	\$55.70	\$59.02	\$62.58	\$65.90	\$69.41	\$72.74
Carton Qty. / Wgt.	6/7 lb	24/26 lb	24/27 lb	24/28 lb	24/30 lb	24/31 lb	24/36 lb



*400 Series replacement parts and stems found on pages 30 & 31.

*To create part number, see How To Use on page 4 and Option 2 on the Creating Your Product Number table.

408 SERIES INTERNAL VACUUM BREAKER WALL HYDRANT

Satin nickel plated Mansfield style wall hydrant with internal vacuum breaker and grey handle. Add -B to the end of the part number for a beige handle.



INLET STYLE CODE	04 4"	06 6"	08 8"	10 10"	12 12"	14 14"
408-D, 420-X, 421-W	\$53.13	\$55.81	\$58.69	\$61.38	\$64.23	\$66.91
409-T, 412-F	\$55.66	\$58.27	\$61.08	\$63.69	\$66.46	\$69.07
Carton Qty. / Wgt.	24/31 lb	24/32 lb	24/34 lb	24/36 lb	24/37 lb	24/43 lb

*408 Series replacement parts and stems found on page 31.

*To create part number, see How To Use on page 4 and Option 2 on the Creating Your Product Number table.



300 SERIES



C-134



C-108

300 SERIES WALL HYDRANT

Satin nickel plated Mansfield style wall hydrant with grey handle. Add -B to the end of the part number for a beige handle.



INLET STYLE CODE	04 4"	06 6"	08 8"	10 10"	12 12"	14 14"
378-D, 390-X	\$42.24	\$44.93	\$47.81	\$50.50	\$53.34	\$56.03
379-T	\$44.30	\$46.99	\$49.87	\$52.56	\$55.40	\$58.09
Carton Qty. / Wgt.	24/28 lb	24/28 lb	24/29 lb	24/32 lb	24/34 lb	24/36 lb

*300 Series replacement parts and stems found on pages 30 & 31.
 *To create part number, see How To Use page and Option 2 on the [Creating Your Product Number](#) table.

C-134 ORIGINAL STYLE WALL HYDRANT

PRIER's original heavy duty wall hydrant. For optional custom plating finish or soft-grip handle, see special pricing on page 5.



INLET STYLE CODE	CC 1 1/2"	04 4"	06 6"	08 8"	10 10"	12 12"	14 14"	16 16"	18 18"	20 20"	22 22"	24 24"
D, W, X	\$45.26	\$49.59	\$52.28	\$55.16	\$57.85	\$60.69	\$63.38	\$69.78	\$72.46	\$75.15	\$77.84	\$80.53
T, F	\$48.67	\$53.13	\$55.89	\$58.85	\$61.62	\$64.54	\$67.31	\$73.89	\$76.65	\$79.42	\$82.18	\$84.95
FW, FX	\$49.38	\$53.96	\$56.81	\$59.86	\$62.70	\$65.72	\$68.56	\$75.34	\$78.18	\$81.03	\$83.87	\$86.72
Carton Qty. / Wgt.	6/7 lb	24/30 lb	24/32 lb	24/36 lb	24/39 lb	24/42 lb	24/45 lb	1/2 lb	1/2 lb	1/2 lb	1/3 lb	1/3 lb

*C-134 Series replacement parts and stems found on pages 30 & 31.

C-108 HOT & COLD ANTI-SIPHON HYDRANT

Vertical or horizontal: same valve. Hot side comes with red handle and loose key. For optional custom plating finish, see special pricing on page 5.



INLET STYLE CODE	CC 1 1/2"	04 4"	06 6"	08 8"	10 10"	12 12"	14 14"	16 16"	18 18"	20 20"	22 22"	24 24"
D, W, X	\$172.68	\$177.64	\$182.61	\$188.81	\$193.77	\$198.49	\$203.46	\$212.31	\$217.27	\$222.24	\$227.20	\$232.16
C, G, Y	\$228.06	\$233.93	\$239.80	\$247.12	\$252.99	\$258.57	\$264.44	\$274.90	\$280.76	\$286.63	\$292.49	\$298.36
T, F	\$178.77	\$183.80	\$188.83	\$195.11	\$200.14	\$204.92	\$209.95	\$218.92	\$223.95	\$228.97	\$234.00	\$239.03
FW, FX	\$179.83	\$184.92	\$190.02	\$196.38	\$201.47	\$206.32	\$211.41	\$220.50	\$225.59	\$230.69	\$235.78	\$240.87
Carton Qty. / Wgt.	6/16 lb	6/18 lb	6/20 lb	6/22 lb	6/24 lb	6/28 lb	6/30 lb	1/4 lb	1/4 lb	1/4 lb	1/5 lb	1/5 lb

*C-108 Series replacement parts and stems found on pages 30 & 31.

C-108SH1 FREEZELESS SHOWER

PRIER's outdoor shower, compatible with the C-108 Hot & Cold Wall Hydrant. Hydrant sold separately.



PART NO.	LIST	QTY./WGT.
C-108SH1	\$234.53	6/16 lb



P-118 TRUETEMP HOT & COLD WALL HYDRANT

The P-118 TrueTemp is a freezeproof, single handle, hot and cold wall hydrant. Two inlet styles: L Style - 1/2" Copper and X Style - 1/2" Crimp Pex. Add -ORB to part number for oil-rubbed bronze finish. For optional custom plating finish, see special pricing on page 5.



INLET STYLE CODE	04 4"	06 6"	08 8"	10 10"	12 12"	14 14"
L	\$543.04	\$578.75	\$616.01	\$651.72	\$687.42	\$723.13
X	\$551.20	\$586.90	\$624.17	\$659.87	\$695.58	\$731.29
L - with Oil-Rubbed Bronze Finish	\$733.10	\$781.31	\$831.61	\$879.82	\$928.02	\$976.23
X - with Oil-Rubbed Bronze Finish	\$744.12	\$792.32	\$842.63	\$890.82	\$939.03	\$987.24
Carton Qty. / Wgt.	12/46 lb	12/51 lb	12/54 lb	12/59 lb	12/62 lb	12/69 lb

*P-118 Series replacement parts and stems found on page 31.

P-114 COOLTEMP COLD ONLY WALL HYDRANT

The P-114 is a freezeproof, high-end, cold wall hydrant. Add -ORB to part number for oil-rubbed bronze finish.



INLET STYLE CODE	04 4"	06 6"	08 8"	10 10"	12 12"	14 14"
D, X, W	\$326.34	\$330.22	\$334.08	\$337.95	\$341.82	\$345.69
T, F	\$328.15	\$332.03	\$335.89	\$339.76	\$343.63	\$347.51
D, X, W - with Oil-Rubbed Bronze Finish	\$440.56	\$445.80	\$451.01	\$456.23	\$461.46	\$466.68
T, F - with Oil-Rubbed Bronze Finish	\$443.00	\$448.24	\$453.45	\$458.68	\$463.90	\$469.14
Carton Qty. / Wgt.	12/23 lb	12/26 lb	12/27 lb	12/30 lb	12/31 lb	12/35 lb

*P-114 replacement parts and stems found on page 31.
Additional lengths available, call for pricing.

P-6IV HEAVY DUTY IRRIGATION SUPPLY VALVE

PRIER's heavy duty irrigation supply valve with a 360° swivel spout and easy-to-reach blowout port.

INLET STYLE CODE	04 4"	06 6"	08 8"	10 10"	12 12"	14 14"	16 16"	18 18"	20 20"	22 22"	24 24"
N - (1" MPT x 3/4" FPT)	\$295.90	\$295.90	\$295.90	\$315.53	\$315.53	\$315.53	\$315.53	\$328.51	\$328.51	\$328.51	\$328.51
Carton Qty. / Wgt.	12/42 lb	12/46 lb	12/49 lb	12/53 lb	12/56 lb	12/62 lb	1/7 lb	1/7 lb	1/7 lb	1/9 lb	1/9 lb

*P-6IV replacement parts and stems found on page 33.

P-WMB1 BRICK BUDDY

PRIER's residential hydrant wall mount bracket for brick, stone, stucco, or siding up to 6" length.

PART NO.	DESCRIPTION	LIST
P-WMB1	Hydrant Installation Device	\$17.47





C-234



C-244



P-254



P-264



C-208

C-234 LOOSE-KEY WALL HYDRANT

Original heavy duty style with extended lock-shield. Includes operating key.



INLET STYLE CODE	CC 1 1/2"	04 4"	06 6"	08 8"	10 10"	12 12"	14 14"	16 16"	18 18"	20 20"	22 22"	24 24"
D, W, X	\$67.19	\$72.96	\$76.54	\$80.38	\$83.97	\$87.76	\$91.34	\$99.87	\$103.46	\$107.04	\$110.62	\$114.21
T, F	\$71.25	\$77.13	\$80.78	\$84.70	\$88.35	\$92.21	\$95.86	\$104.55	\$108.20	\$111.86	\$115.51	\$119.16
Carton Qty. / Wgt.	6/7 lb	24/31 lb	24/33 lb	24/36 lb	24/39 lb	24/42 lb	24/42 lb	1/2 lb	1/2 lb	1/2 lb	1/3 lb	1/3 lb

*C-234 Series replacement parts and stems found on page 31.

C-244 ANTI-SIPHON LOOSE-KEY WALL HYDRANT

Original heavy duty style with vacuum breaker, extended lock-shield, and anti-siphon backflow preventer. Includes operating key.



INLET STYLE CODE	CC 1 1/2"	04 4"	06 6"	08 8"	10 10"	12 12"	14 14"	16 16"	18 18"	20 20"	22 22"	24 24"
D, W, X	\$72.01	\$77.91	\$81.59	\$85.52	\$89.19	\$93.07	\$96.75	\$105.46	\$109.13	\$112.81	\$116.48	\$120.15
C, G, Y	\$83.99	\$90.62	\$94.75	\$99.16	\$103.29	\$107.65	\$111.78	\$121.56	\$125.69	\$129.82	\$133.94	\$138.07
T, F	\$75.95	\$81.94	\$85.67	\$89.66	\$93.39	\$97.34	\$101.07	\$109.91	\$113.64	\$117.37	\$121.10	\$124.83
FW, FX	\$75.01	\$81.00	\$84.73	\$88.72	\$92.45	\$96.39	\$100.12	\$108.97	\$112.69	\$116.42	\$120.15	\$123.88
Carton Qty. / Wgt.	6/8 lb	24/33 lb	24/35 lb	24/39 lb	24/42 lb	24/43 lb	24/47 lb	1/2 lb	1/2 lb	1/2 lb	1/3 lb	1/3 lb

*C-244 Series replacement parts and stems found on pages 30 & 31.

P-254 LEAD-FREE LOOSE-KEY WALL HYDRANT

Lead-free hydrant with hose-threaded vacuum breaker. Includes operating key.



INLET STYLE CODE	CC 1 1/2"	04 4"	06 6"	08 8"	10 10"	12 12"	14 14"	16 16"	18 18"	20 20"	22 22"	24 24"
D, W, X	\$89.57	\$95.03	\$98.43	\$102.07	\$105.46	\$109.05	\$112.45	\$120.53	\$123.93	\$127.32	\$130.72	\$134.11
C, G, Y	\$107.22	\$112.88	\$116.40	\$120.17	\$123.69	\$127.41	\$130.93	\$139.31	\$142.82	\$146.34	\$149.86	\$153.38
T, F	\$92.17	\$97.63	\$101.03	\$104.67	\$108.06	\$111.65	\$115.05	\$123.13	\$126.53	\$129.92	\$133.32	\$136.71
FW, FX	\$91.30	\$96.77	\$100.16	\$103.80	\$107.20	\$110.79	\$114.18	\$122.27	\$125.66	\$129.06	\$132.45	\$135.85
Carton Qty. / Wgt.	6/8 lb	24/33 lb	24/35 lb	24/39 lb	24/42 lb	24/43 lb	24/47 lb	1/2 lb	1/2 lb	1/2 lb	1/3 lb	1/3 lb

*P-254 Series replacement parts and stems found on pages 30 & 31.

P-264 ANTI-SIPHON LOOSE-KEY WALL HYDRANT

Quarter-turn hydrant with vacuum breaker, extended lock-shield, and anti-siphon backflow preventer. Includes operating key.



INLET STYLE CODE	CC 1 1/2"	04 4"	06 6"	08 8"	10 10"	12 12"	14 14"	16 16"	18 18"	20 20"	22 22"	24 24"
D, W, X	\$83.22	\$89.78	\$93.85	\$98.22	\$102.29	\$106.60	\$110.67	\$120.37	\$124.45	\$128.52	\$132.60	\$136.67
C, G, Y	\$98.49	\$105.12	\$109.24	\$113.65	\$117.77	\$122.12	\$126.24	\$136.04	\$140.16	\$144.28	\$148.40	\$152.51
T, F	\$88.89	\$95.74	\$100.00	\$104.55	\$108.81	\$113.30	\$117.56	\$127.68	\$131.94	\$136.19	\$140.44	\$144.70
FW, FX	\$83.72	\$90.22	\$94.25	\$98.57	\$102.60	\$106.86	\$110.90	\$120.49	\$124.53	\$128.56	\$132.59	\$136.62
Carton Qty. / Wgt.	6/8 lb	24/32 lb	24/34 lb	24/38 lb	24/41 lb	24/43 lb	24/45 lb	24/47 lb	1/2 lb	1/2 lb	1/2 lb	1/3 lb

*P-264 Series replacement parts and stems found on pages 30 & 31.

C-208 ANTI-SIPHON LOOSE-KEY WALL HYDRANT

Hot and cold hydrant with extended lock-shield with vacuum breaker. Vertical or horizontal installation. Includes operating key.



INLET STYLE CODE	CC 1 1/2"	04 4"	06 6"	08 8"	10 10"	12 12"	14 14"	16 16"	18 18"	20 20"	22 22"	24 24"
D, W, X	\$218.58	\$224.53	\$230.49	\$237.93	\$243.88	\$249.55	\$255.51	\$266.13	\$272.09	\$278.04	\$284.00	\$289.95
C, G, Y	\$225.64	\$231.17	\$236.70	\$243.61	\$249.14	\$254.41	\$259.94	\$269.80	\$275.33	\$280.86	\$286.39	\$291.92
T, F	\$223.14	\$229.09	\$235.05	\$242.49	\$248.45	\$254.11	\$260.07	\$270.69	\$276.65	\$282.60	\$288.56	\$294.51
FW, FX	\$221.62	\$227.58	\$233.53	\$240.97	\$246.93	\$252.60	\$258.55	\$269.18	\$275.13	\$281.09	\$287.04	\$293.00
Carton Qty. / Wgt.	6/16 lb	6/18 lb	6/20 lb	6/22 lb	6/24 lb	6/28 lb	6/30 lb	1/4 lb	1/4 lb	1/4 lb	1/5 lb	1/5 lb

*C-208 Series replacement parts and stems found on page 30.

COMMERCIAL

PRODUCT SPOTLIGHT



C-634

16 GPM at 25 PSI Differential
 Self-Draining with Hose Attached
 Temperature Rated to 140°
 Four Optional Boxes

P-754

16 GPM at 25 PSI Differential
 Hot & Cold Mixing
 Self-Draining with Hose Attached
 Optional Satin Nickel Plated Box

C-534

9 GPM at 25 PSI Differential
 Self-Draining with Hose Attached
 Single Hole Install Design
 Optional Stainless Steel Box



BX1



BX2



BX3



RB1

Optional boxes - Garage Door Style. Lockable. Tilt-up Construction.

NEW

NARROW WALL HYDRANT

The PRIER P-623 and P-628 Narrow Wall Commercial Wall Hydrant are built for interior walls, great for healthcare, institutional, stadiums, swimming pools, and other large recreational areas.

The P-623 is single-temperature while the P-628 features both hot and cold inlets. Both hydrants come with a lockable, stainless-steel box, offer a variety of installation options, and have integral shutoffs for simple future maintenance. They are designed to last the life of the plumbing system. No special installation tools are required.



- Integral stop allows for service without shutting off entire water system
- ASSE code approved vacuum breaker
- Serviceable from front of unit

PART NO.	DESCRIPTION	LIST	WGT.
P-623	Narrow Wall Commercial Valve, Cold only, Stainless Steel Box	\$742.67	8 lb
P-628	Narrow Wall Commercial Valve, Hot & Cold, Stainless Steel Box	\$941.93	10 lb



C-634 with BX1



C-634

C-634 HEAVY COMMERCIAL WALL HYDRANT

Low profile surface mount with flat back design for easy, single hole installation. Add -HDL to part number for optional handle operation and add \$31.00 to list. Order C-636 for optional 1" Hose Thread Outlet and add \$10.00 to list. For optional custom plating finish, see special pricing on page 5.



INLET STYLE CODE	04 4"	06 6"	08 8"	10 10"	12 12"	14 14"	16 16"	18 18"	20 20"	22 22"	24 24"
N - (1" MPT x 3/4" FPT)	\$377.44	\$377.44	\$377.44	\$399.92	\$399.92	\$399.92	\$399.92	\$485.79	\$485.79	\$485.79	\$485.79
P - (1" Male SWT x 3/4" Female SWT)	\$377.44	\$377.44	\$377.44	\$399.92	\$399.92	\$399.92	\$399.92	\$485.79	\$485.79	\$485.79	\$485.79
V - (3/4" Pro-Press Ready)	\$454.45	\$454.45	\$454.45	\$483.83	\$483.83	\$483.83	\$483.83	\$605.04	\$605.04	\$605.04	\$605.04
Carton Qty. / Wgt.	12/40 lb	12/44 lb	12/47 lb	12/51 lb	12/54 lb	12/60 lb	1/7 lb	1/7 lb	1/7 lb	1/9 lb	1/9 lb

*C-634 Series replacement parts and stems found on pages 32 & 33.

C-633 MILD CLIMATE WALL HYDRANT

Loose key, mild climate commercial hydrant. Available in straight pattern or 360° swivel design. Add -HDL to part number for optional handle operation and add \$31.00 to list price.



INLET STYLE CODE	LIST
NCC - (1" MPT x 3/4" FPT)	\$271.98
NSV - 360° SWIVEL (1" MPT x 3/4" FPT)	\$300.39
PCC - (1" Male SWT x 3/4" Female SWT)	\$271.98
VCC - (3/4" Pro-Press Ready)	\$282.10
Carton Qty. / Wgt.	12/40 lb



C-633NSV

*C-633 Series replacement parts and stems found on page 32.

C-633 & C-634 HYDRANT BOXES

Boxes are sold separately from hydrants and come with watertight gasket.

PART NO.	DESCRIPTION	LIST	WGT.
C-634BX1	Satin Nickel Plated Brass Box	\$376.98	6 lb
C-634BX2	Rough Brass Box	\$359.60	6 lb
C-634BX3	Aluminum Box	\$219.12	4 lb
C-634RB1	Round Satin Nickel Plated Brass Box	\$376.78	6 lb
add -CL	Cylinder Lock for Box	\$73.69	



Watertight Gasket



BX1



BX2



BX3



RB1



P-754



C-534

P-754 HOT & COLD COMMERCIAL WALL HYDRANT

The P-754 is a freezeproof, single handle, hot and cold wall hydrant. The P-754 comes with a 3/4" MPT connection. With a double check backflow preventer and vacuum breaker, the P-754 is ASSE 1052 approved.



INLET STYLE CODE	CC 1 1/2"	04 4"	06 6"	08 8"	10 10"	12 12"	14 14"	16 16"	18 18"	20 20"	22 22"	24 24"
M - (3/4" MPT)	\$727.22	\$727.22	\$727.22	\$727.22	\$864.97	\$864.97	\$864.97	\$864.97	\$945.94	\$945.94	\$945.94	\$945.94
Carton Qty. / Wgt.	1/7 lb	1/7 lb	1/7 lb	1/8 lb	1/9 lb	1/9 lb	1/10 lb	1/14 lb	1/14 lb	1/14 lb	1/18 lb	1/18 lb

*P-754 replacement parts and stems found on page 32.

P-754 WALL HYDRANT BOX

The lockable P-754BX1 box is sold separately.

PART NO.	DESCRIPTION	LIST	WGT.
P-754BX1	Satin Nickel Plated Hydrant Box	\$484.64	8 lb



C-534 ANTI-SIPHON WALL HYDRANT

Loose key, light commercial design with no sprayback. For optional custom plating finish, see special pricing on page 5.



INLET STYLE CODE	CC 1 1/2"	04 4"	06 6"	08 8"	10 10"	12 12"	14 14"	16 16"	18 18"	20 20"	22 22"	24 24"
D, W, X	\$184.71	\$189.11	\$193.50	\$197.90	\$202.30	\$213.55	\$217.95	\$220.95	\$225.35	\$229.75	\$234.15	\$238.55
T, F	\$186.93	\$191.33	\$195.73	\$200.13	\$204.53	\$215.78	\$220.18	\$223.18	\$227.58	\$231.98	\$236.38	\$240.77
Y	\$217.54	\$222.38	\$227.22	\$232.06	\$236.90	\$249.28	\$254.12	\$257.42	\$262.26	\$267.10	\$271.93	\$276.77
FW, FX	\$184.82	\$189.22	\$193.62	\$198.02	\$202.42	\$213.67	\$218.07	\$221.07	\$225.47	\$229.87	\$234.27	\$238.67
Carton Qty. / Wgt.	6/12 lb	16/32 lb	16/34 lb	16/36 lb	16/39 lb	16/40 lb	16/42 lb	1/4 lb	1/4 lb	1/4 lb	1/5 lb	1/5 lb

*C-534 Series replacement parts and stems found on page 32.

C-534 WALL HYDRANT BOX

The lockable C-534BX4 box is sold separately.

PART NO.	DESCRIPTION	LIST	WGT.
C-534BX4	Stainless Steel Hydrant Box	\$208.35	3 lb

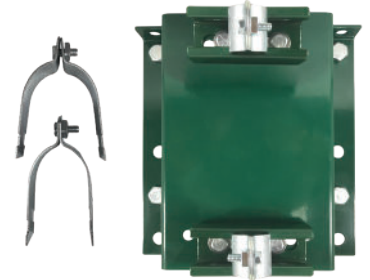




P-RH4 SANITARY ROOF

PRIER's P-RH4 Sanitary Roof Hydrant uses a piston style water displacement system in the reservoir instead of venturi. Drained water is stored in the reservoir, which is beneath the roof line in the warm part of the building. Since it doesn't drain, there's no need to run a drain line from the hydrant, reducing building costs.

- Mounts to roof structure instead of roof surface
- Flows 10 GPM at 25 PSI Differential
- No winterizing required; Freezeless
- Fully serviceable from rooftop
- Roof bracket included (P-RMB)
- Drains with hose attached



Pricing on page 18



Scan for more information



P-360 SANITARY GROUND

PRIER's P-360 Sanitary Ground Hydrant uses a piston style water displacement system in the reservoir instead of venturi. This means the P-360 does not require maintenance or winterization and prevents any waste water from seeping into the hydrant, protecting the water supply.

- Bury depths from 1' to 7'
- Flows 10 GPM at 25 PSI Differential
- No winterization required; Freezeless
- Fully serviceable above ground
- Drains with hose attached



Featured On Cover
Pricing on page 19



Scan for more information

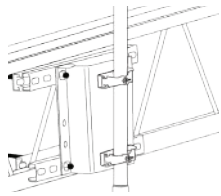


Sanitary Hydrant
Video

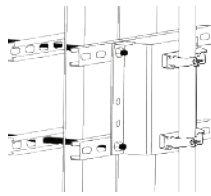


PRIER ROOF HYDRANT INSTALLATION

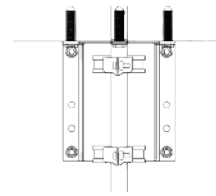
Truss (Purlin) Installation



I-Beam (Column) Installation



Concrete Roof Installation



P-RMB UNIVERSAL MOUNTING BRACKET

Adjustable bracket mounts to any structural member.

PART NO.	DESCRIPTION	LIST	WGT.
P-RMB	Mounting Bracket Only	\$625.57	8 lb

P-RH1 FLUSH MOUNT ROOF HYDRANT

Freezeless anti-siphon hydrant installs flush to roof. Key operated.



PART NO.	DESCRIPTION	LIST	WGT.
P-RH1	Flush mount, freezeless with mounting bracket, 3/4" FPT	\$933.18	17 lb

P-RH2 POST MOUNT ROOF HYDRANT

Freezeless anti-siphon hydrant stands 30" above the roof. Heavy duty cast iron head and lockable lever handle. Add optional P-004CP vacuum breaker for ASSE 1052 approval.

PART NO.	DESCRIPTION	LIST	WGT.
P-RH2	Post mount, freezeless with mounting bracket, 3/4" FPT	\$1,056.12	25 lb

*Optional 1052 Vacuum Breaker pricing on page 20.

P-RH3 MILD CLIMATE ROOF HYDRANT

Commercial hose bibb with anti-siphon vacuum breaker on post 30" above the roof. Convertible to loose key. Satin nickel finish.



PART NO.	DESCRIPTION	LIST	WGT.
P-RH3	Mild climate, with mounting bracket, 3/4" FPT	\$899.67	25 lb

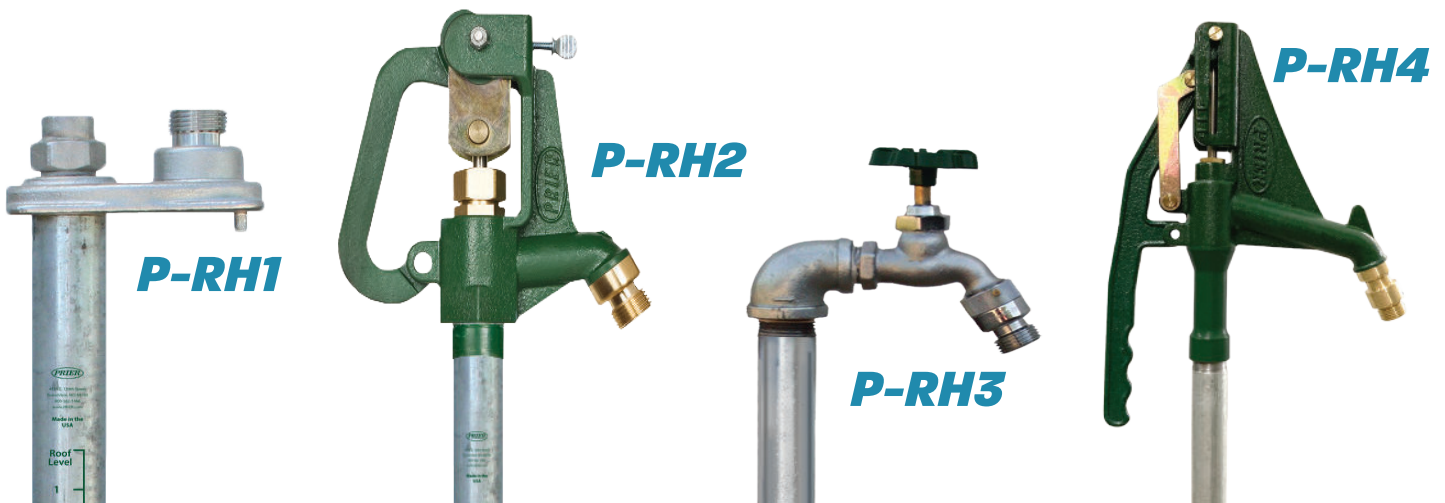
P-RH4 SANITARY ROOF HYDRANT

Freezeless anti-siphon hydrant installs with no drain line needed.



PART NO.	DESCRIPTION	LIST	WGT.
P-RH4	Sanitary, freezeless with mounting bracket, 3/4" FPT	\$1,547.48	30 lb

*P-RH4 Series replacement parts and stems found on page 33.



P-260 GROUND HYDRANT

P-260 has flow control, a built in backflow preventer and can be maintained without removing the head. Optional ASSE 1052 approval by adding vacuum breaker. All-brass pipe and stem models are available. Contact for pricing.

INLET STYLE CODE	01 1'	02 2'	03 3'	04 4'	05 5'	06 6'
P-260 (3/4" FPT)	\$245.33	\$269.09	\$292.85	\$316.61	\$340.37	\$364.13
Wgt.	13 lb	15 lb	17 lb	19 lb	21 lb	23 lb

*P-260 Series replacement parts and stems found on page 33.

P-360 SANITARY GROUND HYDRANT

Sanitary, lead-free, freezeless ground hydrant.

INLET STYLE CODE	01 1'	02 2'	03 3'	04 4'	05 5'	06 6'
P-360 (3/4" FPT)	\$1,341.16	\$1,415.72	\$1,490.28	\$1,567.70	\$1,642.25	\$1,720.04
Wgt.	24 lb	26 lb	28 lb	30 lb	32 lb	34 lb

*P-360 Series replacement parts and stems found on page 33.



P-650 HEAVY COMMERCIAL FREEZELESS GROUND HYDRANT

All-brass pipe and stems available. Contact PRIER for pricing.

INLET STYLE CODE	01 1'	02 2'	03 3'	04 4'	05 5'	06 6'
P-650N (3/4" FPT)	\$385.13	\$439.44	\$493.75	\$548.06	\$602.37	\$656.67
Wgt.	7 lb	8 lb	10 lb	12 lb	14 lb	16 lb
C-634BX1	\$376.98					

*C-634BX1, C634BX2, C-634BX3, and C-634RB1 hydrant boxes are applicable with P-650 Ground Hydrant. Boxes sold separately, see page 15 for pricing.



C-240 ECONOMY GROUND HYDRANT

C-240 variable flow, lockable, freezeless ground hydrant.

INLET STYLE CODE	01 1'	02 2'	03 3'	04 4'	05 5'	06 6'
C-240 (3/4" FPT)	\$240.68	\$256.32	\$277.19	\$298.05	\$323.11	\$348.12
Wgt.	11 lb	12 lb	13 lb	15 lb	16 lb	17 lb

*C-240 Series replacement parts and stems found on page 33.

YH GROUND HYDRANT

YH Economy style, lead-free, freezeless ground hydrant.

INLET STYLE CODE	01 1'	02 2'	03 3'	04 4'	05 5'	06 6'
YH (3/4" FPT)	\$150.24	\$161.32	\$170.26	\$186.19	\$198.76	\$214.41
Wgt.	12 lb	15 lb	17 lb	20 lb	22 lb	24 lb

*YH Series replacement parts and stems found on page 33.



C-250/C-251 GROUND HYDRANT

C-250 full variable flow freezeless, repairable ground hydrant. C-251 is a high volume version with a 1" inlet allowing for greater GPM.

INLET STYLE CODE	01 1'	02 2'	03 3'	04 4'	05 5'	06 6'
C-250 (3/4" FPT)	\$320.87	\$363.53	\$384.44	\$416.20	\$446.52	\$477.78
C-250 Wgt.	13 lb	15 lb	17 lb	19 lb	21 lb	23 lb
C-251 (1" FPT)		\$458.67	\$492.95	\$527.18	\$559.94	\$637.73
C-251 Wgt.		19 lb	21 lb	26 lb	30 lb	34 lb

*C-250/C-251 Series replacement parts and stems found on page 33.





P-156



P-256



P-356

P-156 EXPOSED PIPE ANGLE SILL FAUCETS

Great for parking garages, warehouses, basements, boat docks and anywhere there's an exposed pipe. Inlet option on top and bottom. Integral stop for easy servicing. Includes brass plug for easy close-off and 'drain down' for the system.



PART NO.	INLET	ASSE	OPERATOR	FINISH	LIST	QTY. / WGT.
P-156NP.75	3/4" FPT	1011	handle	satin nickel	\$132.05	24 / 36 lb
P-256NP.75	3/4" FPT	1011	loose key	satin nickel	\$140.03	24 / 38 lb
P-356NP.75	3/4" FPT	1011	handle & key	satin nickel	\$137.89	24 / 38 lb
P-166NP.75	3/4" FPT	1052	handle	satin nickel	\$132.05	24 / 36 lb
P-266NP.75	3/4" FPT	1052	loose key	satin nickel	\$140.03	24 / 38 lb
P-366NP.75	3/4" FPT	1052	handle & key	satin nickel	\$137.89	24 / 38 lb

*Angle Sill Faucet replacement parts and stems found on page 33.

P-002



P-003



P-004



VACUUM BREAKERS



PART NO.	INLET	ASSE	LIST	CARTON QTY. / WGT.
P-002CP	Anti-siphon vacuum breaker, chrome	1011	\$27.84	36 / 10 lb
P-002NP	Anti-siphon vacuum breaker, satin nickel	1011	\$26.64	36 / 10 lb
P-003NP	Self-draining anti-siphon vacuum breaker, satin nickel	1011	\$30.90	36 / 12 lb
P-004CP	Anti-siphon vacuum breaker, chrome	1052	\$29.92	36 / 10 lb
P-004NP	Anti-siphon vacuum breaker, satin nickel	1052	\$28.71	36 / 10 lb



C-155/C-165 HANDLE OPERATED ANGLE SILL FAUCETS

C-155 and C-157 faucets with backflow preventer and vacuum breaker which meets ASSE 1011 standards.

C-165 and C-167 faucets with a double check backflow preventer and vacuum breaker which meets ASSE 1052 standards.

For optional custom plating finish, see special pricing on page 5.



PART NO.		INLET	OPERATOR	FINISH	LIST	CARTON QTY. / WGT.
ASSE 1011	ASSE 1052					
C-155CP.50	C-165CP.50	1/2" FPT	handle	polished chrome	\$93.41	24 / 25 lb
C-155NP.50	C-165NP.50	1/2" FPT	handle	satin nickel	\$64.23	24 / 25 lb
C-155CP.75	C-165CP.75	3/4" FPT	handle	polished chrome	\$93.41	24 / 25 lb
C-155NP.75	C-165NP.75	3/4" FPT	handle	satin nickel	\$64.23	24 / 23 lb
C-155NP.SW		3/4" SWT	handle	satin nickel	\$64.23	24 / 25 lb
C-157NP.50	C-167NP.50	1/2" x 3/4" SWT	handle	satin nickel	\$61.90	24 / 25 lb

ANGLE SILL FAUCET BOXES

Optional boxes for angle sill faucets. Boxes are sold separately.

PART NO.	DESCRIPTION	LIST	WGT.
C-155BX1	Satin Nickel Plated Brass Sill Faucet box	\$443.90	10 lb
C-155BX2	Rough Brass Sill Faucet box	\$426.82	10 lb



C-255/C-265 LOOSE KEY OPERATED ANGLE SILL FAUCETS

C-255 and C-257 faucets with backflow preventer and vacuum breaker which meets ASSE 1011 standards.

C-265 and C-267 faucets with a double check backflow preventer and vacuum breaker which meets ASSE 1052 standards.

For optional custom plating finish, see special pricing on page 5.



PART NO.		INLET	OPERATOR	FINISH	LIST	CARTON QTY. / WGT.
ASSE 1011	ASSE 1052					
C-255CP.50	C-265CP.50	1/2" FPT	loose key	polished chrome	\$98.40	24 / 25 lb
C-255NP.50	C-265NP.50	1/2" FPT	loose key	satin nickel	\$69.23	24 / 24 lb
C-255CP.75	C-265CP.75	3/4" FPT	loose key	polished chrome	\$98.40	24 / 25 lb
C-255NP.75	C-265NP.75	3/4" FPT	loose key	satin nickel	\$69.23	24 / 23 lb
C-257NP.50	C-267NP.50	1/2" x 3/4" SWT	loose key	satin nickel	\$72.94	24 / 25 lb

C-355/C-365 HANDLE & KEY OPERATED ANGLE SILL FAUCETS

C-355 and C-357 faucets with backflow preventer and vacuum breaker which meets ASSE 1011 standards.

C-365 and C-367 faucets with a double check backflow preventer and vacuum breaker which meets ASSE 1052 standards.

For optional custom plating finish, see special pricing on page 5.



PART NO.		INLET	OPERATOR	FINISH	LIST	CARTON QTY. / WGT.
ASSE 1011	ASSE 1052					
C-355CP.50	C-365CP.50	1/2" FPT	handle & key	polished chrome	\$97.17	24 / 25 lb
C-355NP.50	C-365NP.50	1/2" FPT	handle & key	satin nickel	\$67.98	24 / 25 lb
C-355CP.75	C-365CP.75	3/4" FPT	handle & key	polished chrome	\$97.17	24 / 25 lb
C-355NP.75	C-365NP.75	3/4" FPT	handle & key	satin nickel	\$67.98	24 / 25 lb
C-357NP.50	C-367NP.50	1/2" x 3/4" SWT	handle & key	satin nickel	\$70.38	24 / 25 lb

*Angle Sill Faucet replacement parts found on page 33.

C-158



C-135



C-235



C-158/C-168 T-HANDLE ANGLE SILL FAUCETS

C-158 hose bibbs with backflow preventer and vacuum breaker which meets ASSE 1011 standards.

C-168 hose bibbs faucets with a double check backflow preventer and vacuum breaker which meets ASSE 1052 standards.



PART NO.		INLET	OPERATOR	FINISH	LIST	CARTON QTY. / WGT.
ASSE 1011	ASSE 1052					
C-158NP.50	C-168NP.50	1/2" MPT	T-handle	satin nickel	\$71.50	24 / 24 lb
C-158ST.50		1/2" MPT	T-handle w/ stuffing box	satin nickel	\$78.71	24 / 23 lb
C-158NP.75	C-168NP.75	3/4" MPT	T-handle	satin nickel	\$71.50	24 / 24 lb
C-158ST.75	C-168ST.75	3/4" MPT	T-handle w/ stuffing box	satin nickel	\$78.71	24 / 25 lb
C-258NP.50	C-268NP.50	1/2" MPT	loose key	satin nickel	\$93.96	24 / 22 lb
C-258NP.75	C-268NP.75	3/4" MPT	loose key	satin nickel	\$93.96	24 / 23 lb
1/2 MPT INLET	3/4 MPT INLET	OPERATOR		FINISH	LIST	CARTON QTY. / WGT.
C-138NP.50	C-138NP.75	T-handle		satin nickel	\$51.92	24 / 17 lb
C-138ST.50	C-138ST.75	T-handle w/ stuffing box		satin nickel	\$57.52	24 / 19 lb
C-238NP.50	C-238NP.75	loose key		satin nickel	\$73.06	24 / 19 lb

C-135 HANDLE OPERATED ANGLE SILL FAUCETS

For optional custom plating finish, see special pricing on page 5.



PART NO.	INLET	OPERATOR	FINISH	LIST	CARTON QTY. / WGT.
C-135CP.50	1/2" FPT	handle	polished chrome	\$73.77	24 / 24 lb
C-135NP.50	1/2" FPT	handle	satin nickel	\$41.50	24 / 21 lb
C-135CP.75	3/4" FPT	handle	polished chrome	\$73.77	24 / 23 lb
C-135NP.75	3/4" FPT	handle	satin nickel	\$41.50	24 / 20 lb
C-135NP.SW	3/4" SWT	handle	satin nickel	\$41.50	24 / 20 lb
C-137NP.50	1/2" x 3/4" SWT	handle	satin nickel	\$41.94	24 / 22 lb

C-235 LOOSE KEY OPERATED ANGLE SILL FAUCETS

For optional custom plating finish, see special pricing on page 5.

PART NO.	INLET	OPERATOR	FINISH	LIST	CARTON QTY. / WGT.
C-235CP.50	1/2" FPT	loose key	polished chrome	\$77.65	24 / 21 lb
C-235NP.50	1/2" FPT	loose key	satin nickel	\$48.09	24 / 21 lb
C-235CP.75	3/4" FPT	loose key	polished chrome	\$77.65	24 / 22 lb
C-235NP.75	3/4" FPT	loose key	satin nickel	\$48.09	24 / 22 lb
C-237NP.50	1/2" x 3/4" SWT	loose key	satin nickel	\$48.55	24 / 21 lb

*Angle Sill Faucet replacement parts found on page 33.

LEAD-FREE PLUMBING BRASS

* OPTIONAL INTERNAL VACUUM BREAKER

33 SERIES

No-Kink Hose Bibbs

*

34 SERIES

Brass Sillcocks

*

44 SERIES

Hose Bibbs

526 SERIES

Boiler Drains

533 SERIES

Garden Valves

*



Handle Color Options



LIMITED INVENTORY AVAILABLE FOR LEADED PLUMBING BRASS VALVES



33 SERIES



44 SERIES



533 SERIES

33 SERIES NO-KINK HOSE BIBBS

Green T-handles standard. Add -B to end of part number for blue handles and add -R to end of part number for red handles at no extra charge.

PART NO.	INLET	DESCRIPTION	ASSE	LIST	CARTON QTY. / WGT.
33.40	1/2" FPT	Hose bibb, rough brass with t-handle		\$16.44	20 / 12 lb
33.42	1/2" MPT x 1/2" SWT	Hose bibb, rough brass with t-handle		\$16.64	20 / 12 lb
33.43	1/2" COMP	Hose bibb, rough brass with t-handle		\$19.32	20 / 12 lb
33.60	3/4" FPT	Hose bibb, rough brass with t-handle		\$17.49	20 / 13 lb
33.62	3/4" MPT	Hose bibb, rough brass with t-handle		\$17.58	20 / 13 lb
33.67	1/2"SWT x 3/4"SWT	Hose bibb, rough brass with t-handle		\$17.19	20 / 13 lb
33.40LF	1/2" FPT	Lead free hose bibb, rough brass with t-handle		\$18.27	20 / 12 lb
33.42LF	1/2" MPT x 1/2" SWT	Lead free hose bibb, rough brass with t-handle		\$18.49	20 / 12 lb
33.43LF	1/2" COMP	Lead free hose bibb, rough brass with t-handle		\$21.47	20 / 12 lb
33.60LF	3/4" FPT	Lead free hose bibb, rough brass with t-handle		\$19.43	20 / 13 lb
33.62LF	3/4" MPT	Lead free hose bibb, rough brass with t-handle		\$19.53	20 / 13 lb
33.67LF	1/2" x 3/4" SWT	Lead free hose bibb, rough brass with t-handle		\$19.10	20 / 13 lb
33.68LF	1/2" SWT x 3/4" FTG SWT	Lead free hose bibb, rough brass with t-handle		\$19.10	20 / 14 lb
33.40LF-IVB	1/2" FPT	Lead free hose bibb, rough brass with t-handle, internal vaccum breaker	1011	\$27.97	20 / 15 lb
33.42LF-IVB	1/2" MPT x 1/2" SWT	Lead free hose bibb, rough brass with t-handle, internal vaccum breaker	1011	\$28.26	20 / 15 lb
33.43LF-IVB	1/2" COMP	Lead free hose bibb, rough brass with t-handle, internal vaccum breaker	1011	\$31.34	20 / 15 lb
33.60LF-IVB	3/4" FPT	Lead free hose bibb, rough brass with t-handle, internal vaccum breaker	1011	\$29.41	20 / 16 lb
33.62LF-IVB	3/4" MPT	Lead free hose bibb, rough brass with t-handle, internal vaccum breaker	1011	\$29.55	20 / 16 lb
33.67LF-IVB	1/2" x 3/4" SWT	Lead free hose bibb, rough brass with t-handle, internal vaccum breaker	1011	\$29.00	20 / 15 lb
33.68LF-IVB	1/2" x 3/4" FTG SWT	Lead free hose bibb, rough brass with t-handle, internal vaccum breaker	1011	\$29.00	20 / 14 lb

44 SERIES HOSE BIBBS

Green handles standard. Add -B to end of part number for blue handles and add -R to end of part number for red handles at no extra charge.

PART NO.	INLET	DESCRIPTION	LIST	CARTON QTY. / WGT.
44.42	1/2" MPT x 1/2" SWT	Hose bibb, rough brass with t-handle	\$18.65	50 / 28 lb
44.62	3/4" MPT	Hose bibb, rough brass with t-handle	\$18.70	50 / 29 lb
44.42LF	1/2" MPT x 1/2" SWT	Lead free hose bibb, rough brass with t-handle	\$20.72	50 / 28 lb
44.62LF	3/4" MPT	Lead free hose bibb, rough brass with t-handle	\$20.78	50 / 28 lb
630-0044		Service kit for old style hose bibb	\$7.78	6 / 2 lb

533 SERIES GARDEN VALVES

Green handles standard. Add -B to end of part number for blue handles and add -R to end of part number for red handles at no extra charge.

PART NO.	INLET	DESCRIPTION	LIST	CARTON QTY. / WGT.
533.40	1/2" FPT	Sillcock, rough brass with handle	\$21.81	20 / 14 lb
533.60	3/4" FPT	Sillcock, rough brass with handle	\$22.91	20 / 14 lb
533.40LF	1/2" FPT	Lead free sillcock, rough brass with handle	\$24.23	20 / 14 lb
533.60LF	3/4" FPT	Lead free sillcock, rough brass with handle	\$25.45	20 / 14 lb
533.40LF-IVB	1/2" FPT	Lead free sillcock, rough brass with handle, internal vaccum breaker	\$34.19	20 / 17 lb
533.60LF-IVB	3/4" FPT	Lead free sillcock, rough brass with handle, internal vaccum breaker	\$35.52	20 / 17 lb
630-0043		Service kit for old style sillcock, boiler drain and stop valve	\$9.50	6 / 2 lb
630-0045		Handle kit for plumbing brass small valves	\$8.29	6 / 2 lb

LIMITED INVENTORY AVAILABLE FOR LEADED PLUMBING BRASS VALVES



34 SERIES



526 SERIES

34 SERIES SILLCOCKS

Green handles standard. Add -B to end of part number for blue handles and add -R to end of part number for red handles at no extra charge.

PART NO.	INLET	DESCRIPTION	ASSE	LIST	CARTON QTY. / WGT.
34.40	1/2" FPT	Sillcock, rough brass with handle		\$20.92	20 / 14 lb
34.40VB	1/2" FPT	Sillcock, rough brass with handle, vacuum breaker	1011	\$36.92	20 / 18 lb
34.60	3/4" FPT	Sillcock, rough brass with handle		\$19.67	20 / 13 lb
34.60VB	3/4" FPT	Sillcock, rough brass with handle, vacuum breaker	1011	\$36.55	20 / 14 lb
34.67	1/2" or 3/4" SWT	Sillcock, rough brass with handle		\$21.63	20 / 14 lb
34.67VB	1/2" or 3/4" SWT	Sillcock, rough brass with handle, vacuum breaker	1011	\$42.17	20 / 19 lb
34.67VB-PX	1/2" PEX	Sillcock, rough brass with handle, vacuum breaker	1011	\$42.17	20 / 19 lb
34.67PX	1/2" PEX	Sillcock, rough brass with handle		\$23.54	20 / 14 lb
34.40LF	1/2" FPT	Lead free sillcock, rough brass with handle		\$23.24	20 / 14 lb
34.60LF	3/4" FPT	Lead free sillcock, rough brass with handle		\$21.85	20 / 13 lb
34.67LF	1/2" x 3/4" SWT	Lead free sillcock, rough brass with handle		\$24.03	20 / 14 lb
34.40LF-IVB	1/2" FPT	Lead free sillcock, rough brass with handle, internal vacuum breaker	1011	\$34.81	20 / 18 lb
34.60LF-IVB	3/4" FPT	Lead free sillcock, rough brass with handle, internal vacuum breaker	1011	\$33.13	20 / 17 lb
34.67LF-IVB	1/2" x 3/4" SWT	Lead free sillcock, rough brass with handle, internal vacuum breaker	1011	\$36.21	20 / 18 lb
34.40LF-EVB	1/2" FPT	Lead free sillcock, rough brass with handle, external vacuum breaker	1011	\$41.02	20 / 18 lb
34.60LF-EVB	3/4" FPT	Lead free sillcock, rough brass with handle, external vacuum breaker	1011	\$40.61	20 / 14 lb
34.67LF-EVB	1/2" x 3/4" SWT	Lead free sillcock, rough brass with handle, external vacuum breaker	1011	\$46.85	20 / 18 lb
630-0043		Service kit for old style sillcock, boiler drain and stop valve		\$9.50	6 / 2lb
630-0045		Handle kit for plumbing brass small valves		\$8.29	6 / 2lb
630-0048		Vacuum breaker replacement for old style angle sill faucets		\$22.69	6 / 2lb

526 SERIES BOILER DRAINS

Green handles standard. Add -B to end of part number for blue handles and add -R to end of part number for red handles at no extra charge.

PART NO.	INLET	DESCRIPTION	LIST	CARTON QTY. / WGT.
526.40	1/2" FPT	Boiler drain, rough brass with handle	\$17.28	20 / 12 lb
526.42	1/2" MPT x 1/2" SWT	Boiler drain, rough brass with handle	\$16.48	50 / 21 lb
526.43	1/2" COMP	Boiler drain, rough brass with handle	\$18.82	20 / 10 lb
526.62	3/4" MPT	Boiler drain, rough brass with handle	\$16.71	50 / 25 lb
526.40LF	1/2" FPT	Lead free boiler drain, rough brass with handle	\$19.20	20 / 12 lb
526.42LF	1/2" MPT x 1/2" SWT	Lead free boiler drain, rough brass with handle	\$18.31	50 / 21 lb
526.43LF	1/2" COMP	Lead free boiler drain, rough brass with handle	\$20.91	20 / 10 lb
526.62LF	3/4" MPT	Lead free boiler drain, rough brass with handle	\$18.57	50 / 25 lb
630-0043		Service kit for old style sillcock, boiler drain and stop valve	\$9.50	6 / 2 lb
630-0045		Handle kit for plumbing brass small valves	\$8.29	6 / 2 lb

HANDLE COLOR OPTIONS

Green handles standard. Add -B to end of part number for blue handles and add -R to end of part number for red handles at no extra charge.



C-330 SERIES CLEANOUT COVER



PART NO.	TYPE	SIZE	THICKNESS	FINISH	LIST	CARTON QTY. / WGT.
C-330FL03	floor	3"	~14 gauge, 0.08"	matte	\$7.47	24 / 4 lb
C-330FL04	floor	4"	~14 gauge, 0.08"	matte	\$7.87	24 / 6 lb
C-330FL05	floor	5"	~14 gauge, 0.08"	matte	\$11.63	24 / 9 lb
C-330FL06	floor	6"	~14 gauge, 0.08"	matte	\$15.44	24 / 12 lb
C-330FL08	floor	8"	~14 gauge, 0.08"	matte	\$24.84	24 / 22 lb
C-330FL10	floor	10"	~14 gauge, 0.08"	matte	\$41.79	24 / 40 lb
C-330WL03	wall	3"	~22 gauge, 0.03"	mirror	\$3.40	24 / 3 lb
C-330WL04	wall	4"	~22 gauge, 0.03"	mirror	\$4.78	24 / 4 lb
C-330WL05	wall	5"	~22 gauge, 0.03"	mirror	\$6.08	24 / 6 lb
C-330WL06	wall	6"	~22 gauge, 0.03"	mirror	\$9.04	24 / 8 lb
C-330WL08	wall	8"	~22 gauge, 0.03"	mirror	\$16.64	24 / 10 lb
C-330WL10	wall	10"	~22 gauge, 0.03"	mirror	\$23.58	24 / 16 lb

CLEANOUT COVER KIT



PART NO.	TYPE	COVER SIZE	PLUG SIZE	BOLT SIZE	LIST	CARTON QTY. / WGT.
C-330KT-3	wall	3"	1 1/2"	2 1/4"	\$21.35	12 / 5 lb
C-330KT-4	wall	4"	2"	2 1/4"	\$22.75	12 / 6 lb
C-330KT-6	wall	6"	3"	2 1/4"	\$50.52	12 / 8 lb
C-330KT-8	wall	8"	4"	2 1/4"	\$68.01	12 / 14 lb

COVER SCREWS



PART NO.	DESCRIPTION	LIST	CARTON QTY. / WGT.
914-2500-02.25	2 1/4" Stainless steel screw for wall and floor covers	\$1.93	24 / 1 lb
914-2500-04	4" Stainless steel screw for wall and floor covers	\$2.10	24 / 2 lb
914-2500-06	6" Stainless steel screw for wall and floor covers	\$4.55	24 / 3 lb

C-210 SERIES SINK WASTE



PART NO.	DESCRIPTION	LIST	CARTON QTY. / WGT.
C-210BR	1 1/2" Sinkwaste with plug, brass	\$39.43	24 / 22 lb
C-210CP	1 1/2" Sinkwaste with plug, chrome	\$62.49	24 / 22 lb
C-212BR	1" Sinkwaste with plug and tailpiece, brass	\$47.78	24 / 20 lb
C-212CP	1" Sinkwaste with plug and tailpiece, chrome	\$48.10	24 / 20 lb
C-212BR-011	1" Sinkwaste, body and locknut (no tailpiece), brass	\$30.58	24 / 14 lb
C-212CP-011	1" Sinkwaste, body and locknut (no tailpiece), chrome	\$32.82	24 / 14 lb
C-212ST	10" Standpipe for C-212 sinkwaste	\$51.28	1

C-342 BACKWATER VALVE



PART NO.	DESCRIPTION	LIST	CARTON QTY. / WGT.
C-342OR	2" Brass backwater valve with o-ring seal	\$29.97	24 / 15 lb
C-342SP	2" Brass backwater valve with spud washer seal	\$42.51	24 / 15 lb

C-121 BRASS CLOSET FLANGE



PART NO.	DESCRIPTION	LIST	CARTON QTY. / WGT.
C-121-01	#1 Cast brass closet flange, 3/16" collar	\$40.75	24 / 24 lb
C-121-04	#4 Cast brass closet flange, 1 1/8" collar	\$45.73	24 / 32 lb
C-121-06	#6 Cast brass closet flange, 3/8" collar	\$40.64	24 / 26 lb

*Brass Drainage Products replacement parts found on page 34.

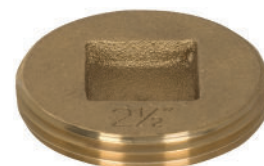
P-310 SERIES BRASS DRAIN

PART NO.	DESCRIPTION	INLET	STRAINER	LIST	CARTON QTY. / WGT.
P-310FE	Brass type q	2" FPT	stainless	\$45.75	24 / 30 lb
P-311CL	Brass with tight nut	2" caulk	stainless	\$59.00	24 / 32 lb
P-311CL-BR	Brass with tight nut	2" caulk	polished brass	\$63.00	24 / 32 lb
P-312SW	Brass angle style	2" SWT	stainless	\$92.34	24 / 60 lb
P-312SW-BR	Brass angle style	2" SWT	polished brass	\$96.34	24 / 60 lb
P-312H	Brass angle style with tall strainer	2" SWT	stainless	\$102.72	24 / 40 lb
P-312H-BR	Brass angle style with tall strainer	2" SWT	polished brass	\$106.72	24 / 40 lb



C-200 CLEANOUT PLUG, COUNTERSUNK, DRILLED & TAPPED

PART NO.	DESCRIPTION	LIST	CARTON QTY. / WGT.
C-200-112	1 1/2" Brass cleanout plug, countersunk	\$6.05	24 / 6 lb
C-200-2	2" Brass cleanout plug, countersunk	\$9.56	24 / 7 lb
C-200-212	2 1/2" Brass cleanout plug, countersunk	\$12.40	24 / 9 lb
C-200-3	3" Brass cleanout plug, countersunk	\$15.69	24 / 10 lb
C-200-312	3 1/2" Brass cleanout plug, countersunk	\$17.79	24 / 12 lb
C-200-4	4" Brass cleanout plug, countersunk	\$28.29	24 / 15 lb
C-200-5	5" Brass cleanout plug, countersunk	\$40.15	24 / 26 lb
C-200-6	6" Brass cleanout plug, countersunk	\$72.25	24 / 35 lb



PART NO.	DESCRIPTION	LIST	CARTON QTY. / WGT.
C-200DR-112	1 1/2" Countersunk plug - drilled & tapped	\$16.02	24 / 6 lb
C-200DR-2	2" Countersunk plug - drilled & tapped	\$16.03	24 / 7 lb
C-200DR-212	2 1/2" Countersunk plug - drilled & tapped	\$37.76	24 / 9 lb
C-200DR-3	3" Countersunk plug - drilled & tapped	\$39.55	24 / 10 lb
C-200DR-312	3 1/2" Countersunk plug - drilled & tapped	\$41.68	24 / 12 lb
C-200DR-4	4" Countersunk plug - drilled & tapped	\$49.44	24 / 15 lb
C-200DR-5	5" Countersunk plug - drilled & tapped	\$62.60	24 / 26 lb
C-200DR-6	6" Countersunk plug - drilled & tapped	\$115.60	24 / 35 lb



PART NO.	DESCRIPTION	LIST	CARTON QTY. / WGT.
C-201-1	1" Square head plug - brass	\$4.82	24 / 5 lb
C-201-114	1 1/4" Square head plug - brass	\$1.90	24 / 6 lb
C-201-112	1 1/2" Square head plug - brass	\$6.55	24 / 5 lb
C-201-2	2" Square head plug - brass	\$7.81	24 / 7 lb
C-201-212	2 1/2" Square head plug - brass	\$11.35	24 / 8 lb
C-201-3	3" Square head plug - brass	\$14.73	24 / 11 lb
C-201-312	3 1/2" Square head plug - brass	\$18.25	24 / 13 lb
C-201-4	4" Square head plug - brass	\$22.42	24 / 16 lb
C-201-5	5" Square head plug - brass	\$35.47	24 / 28 lb
C-201-6	6" Square head plug - brass	\$49.93	24 / 37 lb



PART NO.	DESCRIPTION	LIST	CARTON QTY. / WGT.
C-201DR-1	1" Square head plug - drilled & tapped	\$32.25	24 / 5 lb
C-201DR-114	1 1/4" Square head plug - drilled & tapped	\$33.37	24 / 6 lb
C-201DR-112	1 1/2" Square head plug - drilled & tapped	\$33.50	24 / 5 lb
C-201DR-2	2" Square head plug - drilled & tapped	\$34.42	24 / 7 lb
C-201DR-212	2 1/2" Square head plug - drilled & tapped	\$37.00	24 / 8 lb
C-201DR-3	3" Square head plug - drilled & tapped	\$39.45	24 / 11 lb
C-201DR-312	3 1/2" Square head plug - drilled & tapped	\$42.01	24 / 13 lb
C-201DR-4	4" Square head plug - drilled & tapped	\$44.73	24 / 16 lb
C-201DR-5	5" Square head plug - drilled & tapped	\$54.55	24 / 28 lb
C-201DR-6	6" Square head plug - drilled & tapped	\$80.00	24 / 35 lb



*Brass Drainage Products replacement parts found on page 34.

CAST IRON DRAINS

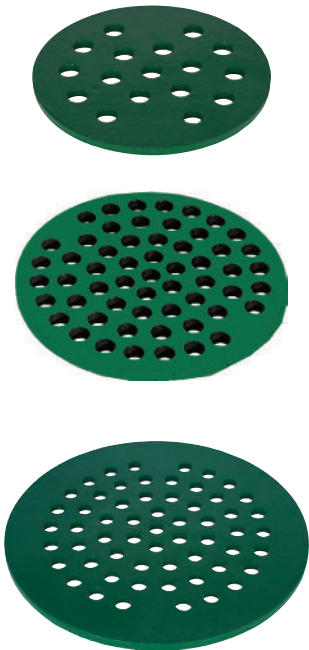


PART NO.	INLET	CLAMP RING	STRAINER	LIST	CARTON QTY. / WGT.
A-110CL-012	2" caulk	threaded	chrome	\$95.78	8 / 46 lb
A-110CL-013	2" caulk	threaded	brass	\$97.78	8 / 46 lb
A-110FE-012	2" FPT	threaded	chrome	\$102.57	8 / 46 lb
A-110FE-013	2" FPT	threaded	brass	\$104.57	8 / 46 lb
B-110CL-012	2" caulk	bolt-down	chrome	\$100.39	8 / 38 lb
B-110CL-013	2" caulk	bolt-down	brass	\$102.39	8 / 38 lb
B-110FE-012	2" FPT	bolt-down	chrome	\$110.48	8 / 40 lb
B-110FE-013	2" FPT	bolt-down	brass	\$112.48	8 / 40 lb
B-110PL-012	2" no hub	bolt-down	chrome	\$106.23	8 / 43 lb
B-110PL-013	2" no hub	bolt-down	brass	\$108.23	8 / 43 lb
B-102-012	2" FPT with trap	bolt-down	chrome	\$172.73	4 / 43 lb
B-102-013	2" FPT with trap	bolt-down	brass	\$174.73	4 / 43 lb
P-315CP	2" MPT	strainer assembly	chrome	\$61.96	24 / 30 lb
P-315BR	2" MPT	strainer assembly	brass	\$63.96	24 / 30 lb
P-315KT-012	w/ screws	strainer top	chrome	\$37.36	1
P-315KT-013	w/ screws	strainer top	brass	\$42.88	1

*Cast Iron Drainage Products replacement parts found on page 34.

P-325 CAST IRON DRAIN COVERS

Order any sized drain cover between 4 1/2" - 12". For custom sizes, not listed on this table, add \$25 to list price of next largest drain cover. Screw holes are available on all drain covers. Specify center-to-center dimension or provide PRIER a template. Add \$25 to list price.



PART NO.	SIZE	MATERIAL	THICKNESS	LIST	CARTON QTY. / WGT.
P-325-412	4 1/2" *	cast iron	1/4"	\$42.66	12 / 13 lb
P-325-434	4 3/4" *	cast iron	1/4"	\$42.66	12 / 13 lb
P-325-478	4 7/8" *	cast iron	1/4"	\$42.66	12 / 13 lb
P-325-05	5"	cast iron	1/4"	\$17.66	12 / 14 lb
P-325-514	5 1/4" *	cast iron	1/4"	\$49.24	12 / 15 lb
P-325-512	5 1/2" *	cast iron	1/4"	\$49.24	12 / 16 lb
P-325-06	6"	cast iron	1/4"	\$24.24	12 / 18 lb
P-325-614	6 1/4"	cast iron	1/4"	\$24.92	12 / 18 lb
P-325-638	6 3/8" *	cast iron	1/4"	\$51.14	12 / 19 lb
P-325-612	6 1/2"	cast iron	1/4"	\$26.14	12 / 20 lb
P-325-658	6 5/8"	cast iron	1/4"	\$26.70	12 / 22 lb
P-325-634	6 3/4"	cast iron	1/4"	\$55.26	12 / 24 lb
P-325-07	7"	cast iron	1/4"	\$30.26	12 / 26 lb
P-325-714	7 1/4"	cast iron	1/4"	\$57.47	12 / 27 lb
P-325-712	7 1/2"	cast iron	1/4"	\$32.47	12 / 28 lb
P-325-734	7 3/4"	cast iron	1/4"	\$58.82	12 / 29 lb
P-325-778	7 7/8" *	cast iron	1/4"	\$58.82	12 / 32 lb
P-325-08	8"	cast iron	1/4"	\$33.82	12 / 32 lb
P-325-814	8 1/4"	cast iron	5/16"	\$85.39	12 / 36 lb
P-325-812	8 1/2"	cast iron	5/16"	\$85.39	12 / 40 lb
P-325-834	8 3/4"	cast iron	5/16"	\$85.39	12 / 46 lb
P-325-09	9"	cast iron	5/16"	\$60.39	12 / 52 lb
P-325-914	9 1/4"	cast iron	5/16"	\$101.19	12 / 56 lb
P-325-912	9 1/2"	cast iron	5/16"	\$101.19	12 / 58 lb
P-325-958	9 5/8" *	cast iron	5/16"	\$101.19	6 / 30 lb
P-325-934	9 3/4"	cast iron	5/16"	\$101.19	12 / 60 lb
P-325-10	10"	cast iron	5/16"	\$76.19	12 / 64 lb
P-325-1014	10 1/4" *	cast iron	5/16"	\$187.54	6 / 34 lb
P-325-1012	10 1/2" *	cast iron	5/16"	\$187.54	6 / 36 lb
P-325-1034	10 3/4" *	cast iron	5/16"	\$187.54	6 / 37 lb
P-325-1078	10 7/8" *	cast iron	5/16"	\$187.54	6 / 38 lb
P-325-11	11" *	cast iron	5/16"	\$187.54	6 / 39 lb
P-325-1138	11 3/8" *	cast iron	5/16"	\$187.54	6 / 41 lb
P-325-1112	11 1/2" *	cast iron	5/16"	\$187.54	6 / 42 lb
P-325-1114	11 1/4" *	cast iron	5/16"	\$187.54	6 / 42 lb
P-325-12	12"	cast iron	5/16"	\$162.54	6 / 36 lb

*Add five days ship time for non-standard drain diameter.

C-64 3-WAY GAS VALVE

PART NO.	DESCRIPTION	LIST	CARTON QTY. / WGT.
C-64BR	3-way gas log lighter valve with hearth key and plug, ½" FPT, polished brass escutcheon	\$80.51	24 / 36 lb
C-64CP	3-way gas log lighter valve with hearth key and plug, ½" FPT, chrome plated escutcheon	\$76.51	24 / 36 lb
510-0001	Polished brass escutcheon for C-64	\$43.89	12 / 7 lb
510-0002	Chrome escutcheon for C-64	\$39.40	12 / 7 lb
537-0001	Packing, teflon for C-64	\$4.62	1
537-0002	Seat washer, teflon for C-64	\$3.41	1
C-64-007	3 ½" brass-plated die cast key	\$6.81	12 / 1 lb
C-64-009	10" brass-plated log lighter key	\$43.37	12 / 2 lb
C-64-015	14" stem extender for C-64	\$18.46	12 / 2 lb



C-69 CAST IRON BURNER BAR

PART NO.	DESCRIPTION	LIST	CARTON QTY. / WGT.
C-69	Cast iron 3-entry burner bar	\$26.60	24 / 46 lb
C-69LP	Cast iron 3-entry burner bar with LP adapter	\$54.14	1 / 2 lb
514-0001	LP adapter only for C-69 burner bar	\$27.54	1



C-67 GAS VALVE WITH EXTENDED STEM

PART NO.	DESCRIPTION	LIST	CARTON QTY. / WGT.
C-67BR.50	½" Extended stem gas valve with hearth key, brass escutcheon	\$69.03	24 / 26 lb
C-67CP.50	½" Extended stem gas valve with hearth key, chrome plated escutcheon	\$66.07	24 / 26 lb
C-67-007	2 ½" Brass-plated die cast key	\$6.18	12 / 2 lb
C-67KT-012	Chrome escutcheon and screw kit for c-67	\$32.67	12 / 4 lb
C-67KT-013	Brass escutcheon and screw kit for c-67	\$30.44	12 / 4 lb



C-70 HEARTHGLOW LOG LIGHTER KIT

PART NO.	DESCRIPTION	LIST	CARTON QTY. / WGT.
C-70BR	Hearthglow log lighter kit; C-64 gas valve with polished brass escutcheon, C-69 burner bar and key	\$107.11	12 / 48 lb
C-70CP	Hearthglow log lighter kit; C-64 gas valve with polished chrome escutcheon, C-69 burner bar and key	\$103.11	12 / 48 lb
C-71BR	Hearthglow log lighter kit; C-67 gas valve with brass escutcheon, C-69 burner bar and key	\$95.64	12 / 48 lb
C-71CP	Hearthglow log lighter kit; C-67 gas valve with polished chrome escutcheon, C-69 burner bar and key	\$92.68	12 / 42 lb



C-184 SELF-CLOSING MULTI-PURPOSE VALVE

PART NO.	SIZE	DESCRIPTION	LIST	CARTON QTY. / WGT.
184-38	¾" x ¾"	Self-closing multi-purpose valve	\$89.78	5 / 3 lb
184-12	½" x ½"	Self-closing multi-purpose valve	\$89.78	5 / 3 lb
630-7966		184 self-closing valve service kit	\$31.59	6 / 2 lb



451 RELIEF VALVE

PART NO.	SIZE	DESCRIPTION	LIST	CARTON QTY. / WGT.
451-12-75	½" MPT	Brass relief valve 75 PSI	\$22.86	50 / 17 lb
451-12-125	½" MPT	Brass relief valve 125 PSI	\$22.86	50 / 17 lb
451-12-150	½" MPT	Brass relief valve 150 PSI	\$22.86	50 / 17 lb
451-12-200	½" MPT	Brass relief valve 200 PSI	\$22.86	50 / 17 lb
451-34-75	¾" MPT	Brass relief valve 75 PSI	\$25.14	50 / 17 lb
451-34-125	¾" MPT	Brass relief valve 125 PSI	\$25.14	50 / 17 lb
451-34-150	¾" MPT	Brass relief valve 150 PSI	\$25.14	50 / 17 lb



370 LIQUID LEVEL CONTROL VALVE

PART NO.	SIZE	DESCRIPTION	LIST	CARTON QTY. / WGT.
370-12	½" x ½"	Liquid level control valve with chain, float and 6" rod	\$84.48	10 / 13 lb
370-34	¾" x ¾"	Liquid level control valve with chain, float and 6" rod	\$84.48	10 / 13 lb
630-7057		370 liquid level valve service kit	\$11.72	6 / 2 lb



190-0 URINAL VALVE

PART NO.	SIZE	DESCRIPTION	LIST	CARTON QTY. / WGT.
190-0	½" x ¾"	Straight pattern urinal flush valve	\$177.08	10 / 21 lb
630-5043		190 urinal valve service kit	\$78.44	6 / 5 lb
630-0040		Timer cartridge for 1075; ¾ gallon	\$126.67	6 / 2 lb
630-0041		Timer cartridge for 1150; 1 ½ gallon	\$126.67	6 / 2 lb
630-0042		Repair kit for 1075 and 1150	\$52.82	6 / 2 lb
190-KT1		Scutum assembly for 190-0	\$18.42	1



STEMS FOR C-144, C-108 & P-154 SERIES

Stems from 1972-2013 are E Style and stems from 2013-Present are G style and are Diamond Series. C-108 uses G style stems only.

PART NO.	DESCRIPTION	LIST
P-231-02CC	E style stem, CC C-144, 5 1/8" OAL	\$24.49
P-231-0204	E style stem, 4" C-144, 7 7/8" OAL	\$26.00
P-231-0206	E style stem, 6" C-144, 9 7/8" OAL	\$28.92
P-231-0208	E style stem, 8" C-144, 11 7/8" OAL	\$31.60
P-231-0210	E style stem, 10" C-144, 13 7/8" OAL	\$34.28
P-231-0212	E style stem, 12" C-144, 15 7/8" OAL	\$36.97
P-231-0214	E style stem, 14" C-144, 17 7/8" OAL	\$39.65
P-231-0216	E style stem, 16" C-144, 19 7/8" OAL	\$42.33
P-231-0218	E style stem, 18" C-144, 21 7/8" OAL	\$45.01
P-231-0220	E style stem, 20" C-144, 23 7/8" OAL	\$47.69
P-231-0222	E style stem, 22" C-144, 25 7/8" OAL	\$50.37
P-231-0224	E style stem, 24" C-144, 27 7/8" OAL	\$53.05
P-231-02US	Universal replacement stem for C-144 *requires soldering	\$39.65
P-231-12CC	G style stem, CC C-144 Diamond Series, 4 3/8" OAL	\$24.27
P-231-1204	G style stem, 4" C-144 Diamond Series, 6 7/8" OAL	\$25.77
P-231-1206	G style stem, 6" C-144 Diamond Series, 8 7/8" OAL	\$28.67
P-231-1208	G style stem, 8" C-144 Diamond Series, 10 7/8" OAL	\$31.32
P-231-1210	G style stem, 10" C-144 Diamond Series, 12 7/8" OAL	\$33.97
P-231-1212	G style stem, 12" C-144 Diamond Series, 14 7/8" OAL	\$36.63
P-231-1214	G style stem, 14" C-144 Diamond Series, 16 7/8" OAL	\$39.29
P-231-1216	G style stem, 16" C-144 Diamond Series, 18 7/8" OAL	\$41.95
P-231-1218	G style stem, 18" C-144 Diamond Series, 20 7/8" OAL	\$44.61
P-231-1220	G style stem, 20" C-144 Diamond Series, 22 7/8" OAL	\$47.27
P-231-1222	G style stem, 22" C-144 Diamond Series, 24 7/8" OAL	\$49.93
P-231-1224	G style stem, 24" C-144 Diamond Series, 26 7/8" OAL	\$52.57

STEMS FOR P-164

Stems from 2010-2013 are F Style and stems from 2013-Present are H style and are Diamond Series.

PART NO.	DESCRIPTION	LIST
P-231-05CC	F style stem, CC P-164 4 7/8" OAL	\$24.49
P-231-0504	F style stem, 4" P-164 6 1/8" OAL	\$26.00
P-231-0506	F style stem, 6" P-164 8 1/8" OAL	\$28.43
P-231-0508	F style stem, 8" P-164 10 1/8" OAL	\$31.01
P-231-0510	F style stem, 10" P-164 12 1/8" OAL	\$33.76
P-231-0512	F style stem, 12" P-164 14 1/8" OAL	\$36.34
P-231-0514	F style stem, 14" P-164 16 1/8" OAL	\$39.09
P-231-0516	F style stem, 16" P-164 18 1/8" OAL	\$41.67
P-231-0518	F style stem, 18" P-164 20 1/8" OAL	\$44.42
P-231-0520	F style stem, 20" P-164 22 1/8" OAL	\$47.01
P-231-0522	F style stem, 22" P-164 24 1/8" OAL	\$49.75
P-231-0524	F style stem, 24" P-164 26 1/8" OAL	\$52.34
P-231-05US	Universal replacement stem for P-164 *requires soldering	\$39.09
P-231-15CC	H style stem, CC P-164 Diamond Series, 4 1/2" OAL	\$24.27
P-231-1504	H style stem, 4" P-164 Diamond Series, 7" OAL	\$25.77
P-231-1506	H style stem, 6" P-164 Diamond Series, 9" OAL	\$27.90
P-231-1508	H style stem, 8" P-164 Diamond Series, 11" OAL	\$30.56
P-231-1510	H style stem, 10" P-164 Diamond Series, 13" OAL	\$33.20
P-231-1512	H style stem, 12" P-164 Diamond Series, 15" OAL	\$35.86
P-231-1514	H style stem, 14" P-164 Diamond Series, 17" OAL	\$38.52
P-231-1516	H style stem, 16" P-164 Diamond Series, 19" OAL	\$41.18
P-231-1518	H style stem, 18" P-164 Diamond Series, 21" OAL	\$43.84
P-231-1520	H style stem, 20" P-164 Diamond Series, 23" OAL	\$46.50
P-231-1522	H style stem, 22" P-164 Diamond Series, 25" OAL	\$49.15
P-231-1524	H style stem, 24" P-164 Diamond Series, 27" OAL	\$51.81

STEMS FOR C-134 SERIES

Stems from 1954-1961 are B Style. Stems from 1961-1963 are C Style. Stems from 1963-1972 are D Style. Stems from 1972-April 2013 are E Style. Stems from 2013-Present are G Style and are Diamond Series.

PART NO.	DESCRIPTION	LIST
C-134BS04	B style stem, 4" C-134, 8 1/8" OAL	\$51.90
C-134BS06	B style stem, 6" C-134, 10 1/8" OAL	\$54.78
C-134BS08	B style stem, 8" C-134, 12 1/8" OAL	\$57.66
C-134BS10	B style stem, 10" C-134, 14 1/8" OAL	\$60.54
C-134BS12	B style stem, 12" C-134, 16 1/8" OAL	\$63.42
C-134BS14	B style stem, 14" C-134, 18 1/8" OAL	\$67.55
C-134CS04	C style stem, 4" C-134, 7 1/8" OAL	\$50.49
C-134CS06	C style stem, 6" C-134, 9 1/8" OAL	\$53.37
C-134CS08	C style stem, 8" C-134, 11 1/8" OAL	\$56.25
C-134CS10	C style stem, 10" C-134, 13 1/8" OAL	\$59.13
C-134CS12	C style stem, 12" C-134, 15 1/8" OAL	\$62.01
C-134CS14	C style stem, 14" C-134, 17 1/8" OAL	\$65.63
C-134DS04	D style stem, 4" C-134, 7 5/8" OAL	\$51.29
C-134DS06	D style stem, 6" C-134, 9 5/8" OAL	\$54.17
C-134DS08	D style stem, 8" C-134, 11 5/8" OAL	\$57.05
C-134DS10	D style stem, 10" C-134, 13 5/8" OAL	\$59.93
C-134DS12	D style stem, 12" C-134, 15 5/8" OAL	\$62.81
C-134DS14	D style stem, 14" C-134, 17 5/8" OAL	\$66.71
C-134US	Universal replacement stem for B, C, and D styles *requires soldering	\$67.55
P-231-01CC	E style stem, CC C-134, 5 1/8" OAL	\$23.39
P-231-0104	E style stem, 4" C-134, 7 5/8" OAL	\$25.21
P-231-0106	E style stem, 6" C-134, 9 5/8" OAL	\$27.02
P-231-0108	E style stem, 8" C-134, 11 5/8" OAL	\$29.57
P-231-0110	E style stem, 10" C-134, 13 5/8" OAL	\$32.25
P-231-0112	E style stem, 12" C-134, 15 5/8" OAL	\$34.93
P-231-0114	E style stem, 14" C-134, 17 5/8" OAL	\$37.61
P-231-0116	E style stem, 16" C-134, 19 5/8" OAL	\$40.29
P-231-0118	E style stem, 18" C-134, 21 5/8" OAL	\$42.97
P-231-0120	E style stem, 20" C-134, 23 5/8" OAL	\$45.65
P-231-0122	E style stem, 22" C-134, 25 5/8" OAL	\$48.33
P-231-0124	E style stem, 24" C-134, 27 5/8" OAL	\$51.01
P-231-01US	Universal replacement stem for E style *requires soldering	\$37.61
P-231-11CC	G style stem, CC C-134 Diamond Series, 4 3/8" OAL	\$22.83
P-231-1104	G style stem, 4" C-134 Diamond Series, 6 7/8" OAL	\$24.33
P-231-1106	G style stem, 6" C-134 Diamond Series, 8 7/8" OAL	\$26.64
P-231-1108	G style stem, 8" C-134 Diamond Series, 10 7/8" OAL	\$29.30
P-231-1110	G style stem, 10" C-134 Diamond Series, 12 7/8" OAL	\$31.96
P-231-1112	G style stem, 12" C-134 Diamond Series, 14 7/8" OAL	\$34.62
P-231-1114	G style stem, 14" C-134 Diamond Series, 16 7/8" OAL	\$37.28
P-231-1116	G style stem, 16" C-134 Diamond Series, 18 7/8" OAL	\$39.94
P-231-1118	G style stem, 18" C-134 Diamond Series, 20 7/8" OAL	\$42.58
P-231-1120	G style stem, 20" C-134 Diamond Series, 22 7/8" OAL	\$45.24
P-231-1122	G style stem, 22" C-134 Diamond Series, 24 7/8" OAL	\$47.90
P-231-1124	G style stem, 24" C-134 Diamond Series, 26 7/8" OAL	\$50.56

PARTS FOR 300, 400, AND 500 SERIES (1970 - PRESENT, 500 RETIRED)

PART NO.	DESCRIPTION	LIST
630-7500	400/500 series vacuum breaker kit	\$7.46
630-7755	300/400/500 series service kit	\$21.02
630-7965	300/400/500 series handle kit-grey	\$10.82
630-8500	Complete service, handle and vacuum breaker kit	\$32.60
337-3012	Spacer/siding wedge-grey	\$3.22

STEMS FOR 300 SERIES

Stems from 2013-Present are G style and are Diamond Series.

PART NO.	DESCRIPTION	LIST
M-123-5031	Stem, 4" 300 Series, 7 7/8" OAL	\$25.54
M-123-5032	Stem, 6" 300 Series, 9 7/8" OAL	\$28.41
M-123-5033	Stem, 8" 300 Series, 11 7/8" OAL	\$31.28
M-123-5034	Stem, 10" 300 Series, 13 7/8" OAL	\$34.15
M-123-5035	Stem, 12" 300 Series, 15 7/8" OAL	\$37.02
M-123-5036	Stem, 14" 300 Series, 17 7/8" OAL	\$39.88
M-231-3104	G style stem, 4" 300 Diamond Series, 6 5/8" OAL	\$21.16
M-231-3106	G style stem, 6" 300 Diamond Series, 8 5/8" OAL	\$23.74
M-231-3108	G style stem, 8" 300 Diamond Series, 10 5/8" OAL	\$26.81
M-231-3110	G style stem, 10" 300 Diamond Series, 12 5/8" OAL	\$30.34
M-231-3112	G style stem, 12" 300 Diamond Series, 14 5/8" OAL	\$33.88
M-231-3114	G style stem, 14" 300 Diamond Series, 16 5/8" OAL	\$37.42

STEMS FOR 400 SERIES (2006-APRIL 2013) & 408 INTERNAL VACUUM BREAKER SERIES

PART NO.	DESCRIPTION	LIST
M-123-4090	Stem, 4" 400 Series, 8" OAL	\$35.03
M-123-4092	Stem, 6" 400 Series, 10" OAL	\$37.65
M-123-4093	Stem, 8" 400 Series, 12" OAL	\$40.26
M-123-4094	Stem, 10" 400 Series, 14" OAL	\$42.88
M-123-4095	Stem, 12" 400 Series, 16" OAL	\$45.50
M-123-4096	Stem, 14" 400 Series, 18" OAL	\$48.11

STEMS FOR 400 DIAMOND SERIES (APRIL 2013 - PRESENT)

PART NO.	DESCRIPTION	LIST
M-231-3204	H style stem, 4" 400 Diamond Series, 6 5/8" OAL	\$24.08
M-231-3206	H style stem, 6" 400 Diamond Series, 8 5/8" OAL	\$27.32
M-231-3208	H style stem, 8" 400 Diamond Series, 10 5/8" OAL	\$31.22
M-231-3210	H style stem, 10" 400 Diamond Series, 12 5/8" OAL	\$35.11
M-231-3212	H style stem, 12" 400 Diamond Series, 14 5/8" OAL	\$39.00
M-231-3214	H style stem, 14" 400 Diamond Series, 16 5/8" OAL	\$42.89

STEMS FOR LEAD FREE 400 DIAMOND SERIES (APRIL 2013 - PRESENT)

PART NO.	DESCRIPTION	LIST
M-231-3204-LF	H style stem, 4" 400 LF Diamond Series, 6 5/8" OAL	\$31.89
M-231-3206-LF	H style stem, 6" 400 LF Diamond Series, 8 5/8" OAL	\$35.81
M-231-3208-LF	H style stem, 8" 400 LF Diamond Series, 10 5/8" OAL	\$39.74
M-231-3210-LF	H style stem, 10" 400 LF Diamond Series, 12 5/8" OAL	\$43.66
M-231-3212-LF	H style stem, 12" 400 LF Diamond Series, 14 5/8" OAL	\$47.59
M-231-3214-LF	H style stem, 14" 400 LF Diamond Series, 16 5/8" OAL	\$51.51

STEMS FOR 500 SERIES (1970-2006)

PART NO.	DESCRIPTION	LIST
M-123-0090	Stem, 4" 500 Series, 8" OAL	\$35.03
M-123-0092	Stem, 6" 500 Series, 10" OAL	\$37.65
M-123-0093	Stem, 8" 500 Series, 12" OAL	\$40.26
M-123-0094	Stem, 10" 500 Series, 14" OAL	\$42.88
M-123-0095	Stem, 12" 500 Series, 16" OAL	\$45.50
M-123-0096	Stem, 14" 500 Series, 18" OAL	\$48.11

PARTS FOR P-118

PART NO.	DESCRIPTION	LIST
P-231-1804	Stem for 4" P-118 Hydrant 6 7/8" OAL	\$30.92
P-231-1806	Stem for 6" P-118 Hydrant 8 7/8" OAL	\$32.93
P-231-1808	Stem for 8" P-118 Hydrant 10 7/8" OAL	\$34.93
P-231-1810	Stem for 10" P-118 Hydrant 12 7/8" OAL	\$36.93
P-231-1812	Stem for 12" P-118 Hydrant 14 7/8" OAL	\$38.82
P-231-1814	Stem for 14" P-118 Hydrant 16 7/8" OAL	\$40.82
P-118KT-805	Handle Kit - Satin Nickel Plated	\$73.40
P-118KT-805-ORB	Handle Kit - Oil Rubbed Bronze	\$106.87
P-118KT-801	All Seals Kit	\$3.41
630-7500	Vacuum Breaker Kit - Satin Nickel Plated	\$7.99
C-144KT-806-ORB	Vacuum Breaker Kit - Oil Rubbed Bronze	\$8.89
P-118KT-807-04	Overhaul Kit for 4" P-118 Hydrant	\$166.61
P-118KT-807-06	Overhaul Kit for 6" P-118 Hydrant	\$173.63
P-118KT-807-08	Overhaul Kit for 8" P-118 Hydrant	\$180.65
P-118KT-807-10	Overhaul Kit for 10" P-118 Hydrant	\$187.57
P-118KT-807-12	Overhaul Kit for 12" P-118 Hydrant	\$194.59
P-118KT-807-14	Overhaul Kit for 14" P-118 Hydrant	\$201.61
P-118KT-810	Mounting Bracket Kit	\$15.97

PARTS FOR P-114

PART NO.	DESCRIPTION	LIST
P-231-1604	Stem for 4" P-114 Hydrant 7" OAL	\$39.40
P-231-1606	Stem for 6" P-114 Hydrant 9" OAL	\$41.58
P-231-1608	Stem for 8" P-114 Hydrant 11" OAL	\$43.76
P-231-1610	Stem for 10" P-114 Hydrant 13" OAL	\$45.94
P-231-1612	Stem for 12" P-114 Hydrant 15" OAL	\$48.12
P-231-1614	Stem for 14" P-114 Hydrant 17" OAL	\$50.30
P-114KT-805	Handle Kit - Satin Nickel Plated	\$69.50
P-114KT-805-ORB	Handle Kit - Oil Rubbed Bronze	\$91.26
C-144KT-806	Vacuum Breaker Kit - Satin Nickel Plated	\$7.46
C-144KT-806-ORB	Vacuum Breaker Kit - Oil Rubbed Bronze	\$8.89
336-0002	Backflow Preventer	\$2.86
C-134KT-802	Seat Washer Replacement Kit	\$4.32

PARTS FOR C-134, C-234, C-144, C-108, P-154 & P-164 (1972 - PRESENT, C-154 RETIRED)

PART NO.	DESCRIPTION	LIST
300-1008	Valve stem cap	\$15.87
310-1015	Vandal proof lock shield	\$16.96
336-0002	C-144 backflow preventer	\$2.86
390-1001	Packing only	\$3.79
C-108KT-808	Loose key on lanyard	\$12.36
C-108KT-805	Red Handle Kit for Hot & Cold	\$12.55
C-134KT-802	OO bevel bibb washer and screw kit	\$4.32
C-134KT-803	Packing and washer kit	\$5.51
C-134KT-804	Loose key conversion kit	\$39.89
C-134KT-805	Handle and screw kit	\$8.88
C-134KT-807	C-134 overhaul kit	\$10.98
C-135KT-802	1/4 L bibb washer and screw kit	\$3.22
C-144KT-806	C-144 and P-164 vacuum breaker kit	\$7.46
C-144KT-807	C-144 overhaul kit	\$15.90
C-234KT-804	Loose key to handle kit	\$27.59
P-154KT-806	Replacement vacuum breaker	\$34.28
P-164KT-805	Soft grip handle and screw kit	\$11.49
P-164KT-807	P-164 overhaul kit	\$18.48

PARTS & STEMS FOR P-754

PART NO.	DESCRIPTION	LIST
P-231-0604	Stem for 4" C-634 Hydrant, 4 11/16" OAL	\$99.29
P-231-0606	Stem for 6" C-634 Hydrant, 6 11/16" OAL	\$104.97
P-231-0608	Stem for 8" C-634 Hydrant, 8 11/16" OAL	\$110.64
P-231-0610	Stem for 10" C-634 Hydrant, 10 11/16" OAL	\$116.32
P-231-0612	Stem for 12" C-634 Hydrant, 12 11/16" OAL	\$122.00
P-231-0614	Stem for 14" C-634 Hydrant, 14 11/16" OAL	\$127.68
P-231-0616	Stem for 16" C-634 Hydrant, 16 11/16" OAL	\$133.36
P-231-0618	Stem for 18" C-634 Hydrant, 18 11/16" OAL	\$139.03
P-231-0620	Stem for 20" C-634 Hydrant, 20 11/16" OAL	\$144.71
P-231-0622	Stem for 22" C-634 Hydrant, 22 11/16" OAL	\$150.39
P-231-0624	Stem for 24" C-634 Hydrant, 24 11/16" OAL	\$164.28
300-6003	Valve Stem Cap (NP Brass)	\$19.56
300-6004	3/4" Hose Piece (NP Brass)	\$72.44
336-0001	O-Ring Worm Sleeve	\$3.53
336-6001	O-Ring Worm Drive	\$5.28
337-6001	Check Spider-Vacuum Breaker	\$7.44
C-108KT-808	Loose Key on Lanyard	\$12.36
C-634KT-802	Stopper Kit, Includes Stopper and Pin, O-Ring	\$30.36
C-634KT-806	Vacuum Breaker Assembly	\$91.24
C-634KT-808	Worm Sleeve with O-Ring, Pin and Tool	\$27.35
C-634KT-809	Worm Drive Assembly with O-Ring	\$40.45
399-0001	Secondary Check for ASSE 1052	\$10.31
C-634KT-807	C-634 Overhaul Kit	\$168.87

PARTS FOR C-434 & C-534 SERIES (2007 - PRESENT)

PART NO.	DESCRIPTION	LIST
300-1011	Valve stem cap for C-434	\$26.33
300-1021	Valve stem cap for C-534	\$44.66
C-108KT-808	Loose key on lanyard	\$12.36
P-164KT-805	Soft-grip handle and screw kit	\$11.49
C-434KT-804	Loose key conversion kit for C-434	\$48.98
C-534KT-804	Loose key to handle kit for C-534	\$34.08
C-434KT-902	Stopper and pin kit	\$24.97
C-434KT-903	EPDM packing and washer kit	\$5.87
C-434KT-906	Vacuum breaker kit	\$53.61
C-434KT-907	C-434 overhaul kit	\$77.91
C-534KT-907	C-534 overhaul kit	\$60.65

STEMS FOR C-434 & C-534 SERIES

PART NO.	DESCRIPTION	LIST
P-231-04CC	Stem, CC current C-434/C-534, 3 7/8" OAL	\$57.08
P-231-0404	Stem, 4" current C-434/C-534, 6 3/4" OAL	\$58.90
P-231-0406	Stem, 6" current C-434/C-534, 8 3/4" OAL	\$60.72
P-231-0408	Stem, 8" current C-434/C-534, 10 3/4" OAL	\$62.54
P-231-0410	Stem, 10" current C-434/C-534, 12 3/4" OAL	\$64.35
P-231-0412	Stem, 12" current C-434/C-534, 14 3/4" OAL	\$66.17
P-231-0414	Stem, 14" current C-434/C-534, 16 3/4" OAL	\$67.99
P-231-0416	Stem, 16" current C-434/C-534, 18 3/4" OAL	\$69.80
P-231-0418	Stem, 18" current C-434/C-534, 20 3/4" OAL	\$71.62
P-231-0420	Stem, 20" current C-434/C-534, 22 3/4" OAL	\$73.44
P-231-0422	Stem, 22" current C-434/C-534, 24 3/4" OAL	\$75.25
P-231-0424	Stem, 24" current C-434/C-534, 26 3/4" OAL	\$77.07

PARTS FOR C-434 AND C-534 (PRE-2007)

PART NO.	DESCRIPTION	LIST
C-134KT-803	Packing and packing washer kit	\$5.51
C-434KT-802	Bullet washer and o-ring kit	\$13.18
C-434KT-806	Vacuum breaker kit	\$29.64
C-434KT-807	C-434 overhaul kit	\$76.74
C-534KT-807	C-534 overhaul kit	\$99.49
P-231-03CC	Stem, CC retired C-434 and C-534 4 9/16" OAL	\$78.26
P-231-0304	Stem, 4" retired C-434 and C-534 7 1/16" OAL	\$81.36
P-231-0306	Stem, 6" retired C-434 and C-534 9 1/16" OAL	\$84.60
P-231-0308	Stem, 8" retired C-434 and C-534 11 1/16" OAL	\$87.84
P-231-0310	Stem, 10" retired C-434 and C-534 13 1/16" OAL	\$91.08
P-231-0312	Stem, 12" retired C-434 and C-534 15 1/16" OAL	\$94.31
P-231-0314	Stem, 14" retired C-434 and C-534 17 1/16" OAL	\$97.53
P-231-0318	Stem, 18" retired C-434 and C-534 21 1/16" OAL	\$104.00
P-231-0324	Stem, 24" retired C-434 and C-534 27 1/16" OAL	\$113.71

PARTS AND STEMS FOR C-633 SERIES (2015 - PRESENT)

PART NO.	DESCRIPTION	LIST
P-231-06CC	Stem assembly	\$101.34
300-6003	Valve stem cap	\$19.56
300-6004	3/4" Hose piece	\$72.44
337-6001	Vacuum breaker check spider	\$7.44
399-0001	Vacuum breaker secondary check	\$10.31
C-108KT-808	Loose key on lanyard	\$12.36
C-634KT-802	Stopper and pin kit	\$30.36
C-634KT-806	Vacuum breaker kit	\$91.24
C-634KT-809	Worm drive assembly	\$40.45

STEMS FOR CURRENT C-634 (2007 - PRESENT)

PART NO.	DESCRIPTION	LIST
P-231-0604	Stem, 4" current C-634, 4 11/16" OAL	\$99.29
P-231-0606	Stem, 6" current C-634, 6 11/16" OAL	\$104.97
P-231-0608	Stem, 8" current C-634, 8 11/16" OAL	\$110.64
P-231-0610	Stem, 10" current C-634, 10 11/16" OAL	\$116.32
P-231-0612	Stem, 12" current C-634, 12 11/16" OAL	\$122.00
P-231-0614	Stem, 14" current C-634, 14 11/16" OAL	\$127.68
P-231-0616	Stem, 16" current C-634, 16 11/16" OAL	\$133.36
P-231-0618	Stem, 18" current C-634, 18 11/16" OAL	\$139.03
P-231-0620	Stem, 20" current C-634, 20 11/16" OAL	\$144.71
P-231-0622	Stem, 22" current C-634, 22 11/16" OAL	\$150.39
P-231-0624	Stem, 24" current C-634, 24 11/16" OAL	\$164.28

PARTS FOR C-634 (2006 - PRESENT)

PART NO.	DESCRIPTION	LIST
300-6003	Valve stem cap	\$19.56
300-6004	3/4" Hose piece	\$72.44
336-0001	O-ring, worm sleeve	\$3.53
336-6001	O-ring, worm drive	\$5.28
399-6001	Stopper only	\$27.50
C-108KT-808	Loose key on lanyard	\$12.36
C-634KT-802	Stopper and pin kit	\$30.36
C-634KT-806	Vacuum breaker kit	\$91.24
C-634KT-807	C-634 overhaul kit	\$168.87
C-634KT-808	Worm sleeve assembly	\$27.35
C-634KT-809	Worm drive assembly	\$40.45
C-634WCR	Wall clamp ring	\$23.87

PARTS FOR C-132 AND C-133 (RETIRED)

PART NO.	DESCRIPTION	LIST
310-2003	Worm sleeve for retired C-132	\$102.59
310-2006	Worm stem for retired C-132	\$109.35
310-2007	Packing nut for retired C-132	\$42.78
394-2008	Packing for retired C-132	\$22.23
310-2009	Worm assembly nut for retired C-132	\$97.35
320-2011	Brass packing washer for retired C-132	\$29.58
310-4003	Worm sleeve for retired C-133	\$97.99
392-4005	Worm stem assembly for retired C-133	\$59.40
391-4008	Retainer seal for retired C-133	\$14.80
310-4009	Face nut for retired C-133	\$98.71
C-235-007	Operating key for retired C-132/133	\$8.27
391-2018	Nylon seat for retired C-132/133	\$6.74
392-2020	Seat washer plunger for retired C-132/133	\$62.73

PARTS FOR C-634, C-635, AND C-650 (RETIRED)

PART NO.	DESCRIPTION	LIST
310-6008	Hose piece for retired C-634	\$198.96
310-6010	Drive sleeve for retired C-634	\$186.21
310-6012	Drive sleeve for retired C-635	\$67.42
320-4007	Thrust washer for retired C-634/635	\$14.15
337-6001	Diverter check spider for retired C-634	\$7.44
340-6005	O-ring, worm sleeve for retired C-634	\$2.01
391-2018	Nylon seat for retired C-635	\$6.74
391-4008	Retainer seal for retired C-634	\$14.80
392-4005	Worm stem assembly for retired C-634	\$59.40
395-6009	Plunger for retired C-634	\$63.80
395-6010	Plunger for retired C-650	\$55.59
C-235-007	Operating key for retired C-634	\$8.27
C-634KT1	Retainer seal, o-ring, and plunger for retired C-634	\$100.87
C-634KT2	Overhaul kit for retired C-634	\$780.92
C-635KT-802	Seat washer and screw kit for retired C-635	\$12.92

PARTS FOR P-RH4 AND P-360

PART NO.	DESCRIPTION	LIST
301-7005	Hydrant Head	\$136.51
301-7007	Handle Link	\$59.16
P-360KT-802	O-Ring Replacement Kit	\$7.12
P-360KT-806	Vacuum Breaker Kit	\$63.73

PARTS FOR P-260

PART NO.	DESCRIPTION	LIST
301-7001	Hydrant head	\$106.01
301-7003	Handle, cast iron	\$30.73
304-7001	Draw straps	\$9.52
310-7001	Bury stem end handle seal	\$10.98
310-7003	Seal adapter, brass	\$14.74
310-7005	Valve stem cap, brass	\$14.07
310-7006	Hose piece, 3/4" hose thread	\$15.13
314-0009	Hex nut with nylon	\$0.48
314-0011	Handle bolt, stainless steel	\$1.80
314-7001	Connector nut, adjustable	\$14.10
314-7002	Upper rod, stainless steel	\$12.14
315-0001	Thumb screw, flow control	\$1.66
336-0001	O-ring, EPDM	\$3.53
336-0008	Packing, EPDM	\$3.32
P-260KT-802	Stopper repair kit	\$18.34
P-260KT-807	P-260 overhaul kit	\$57.95

PARTS FOR C-240 AND C-250

PART NO.	DESCRIPTION	LIST
232-0001	Pivot connector and nuts for C-240/250	\$19.56
300-0027	Valve body, brass for C-240	\$164.16
301-0001	Handle, cast iron for C-250	\$76.84
301-0002	Handle, cast iron for C-240	\$54.35
301-0003	Head casting for C-240	\$177.08
301-0004	Head casting for C-250	\$157.18
310-0010	Packing nut for C-240/250	\$20.26
310-0011	Valve body, brass for C-250	\$181.63
310-0014	Brass connecting rod for C-240/250	\$17.46
314-0002	Stem rod, stainless for C-240/250	\$25.36
324-1004	Draw straps, pair for C-240/250	\$18.86
314-0003	C-250 Extension Rod	\$70.50
314-0034	C-240 Extension Rod	\$5.44
340-0002	Cup leathers, pair for C-250	\$16.77
346-0001	Packing for C-240/250	\$13.98
C-240-021	Plunger assembly for C-240	\$29.69
C-240-801	Overhaul kit for C-240	\$80.33
C-250-021	Plunger assembly for C-250	\$69.86
C-250-801	C-250 overhaul kit	\$122.25

PARTS FOR YH SERIES

PART NO.	DESCRIPTION	LIST
630-9002	YH repair kit, red/blue	\$195.80
630-9004	YH repair kit, green	\$127.34

PARTS FOR P-6IV

PART NO.	DESCRIPTION	LIST
P-231-0904	Stem for 4" P-6IV Hydrant, 4.7" OAL	\$36.65
P-231-0906	Stem for 6" P-6IV Hydrant, 6.7" OAL	\$40.20
P-231-0908	Stem for 8" P-6IV Hydrant, 8.7" OAL	\$43.75
P-231-0910	Stem for 10" P-6IV Hydrant, 10.7" OAL	\$47.30
P-231-0912	Stem for 12" P-6IV Hydrant, 12.7" OAL	\$50.85
P-231-0914	Stem for 14" P-6IV Hydrant, 14.7" OAL	\$54.40
C-634KT-802	Stopper Kit	\$30.36
C-634KT-808	Worm Sleeve with O-Ring	\$27.35
C-634KT-809	Worm Drive Assembly with O-Ring	\$40.45

PARTS FOR ANGLE SILL FAUCETS

PART NO.	DESCRIPTION	LIST
231-0001	Stem assembly for C-135/137/235/255/165/265, P-156	\$16.59
231-0002	Stem assembly for C-138ST	\$18.18
300-1008	Valve stem cap, satin nickel	\$15.87
300-1013	Valve stem cap, polished chrome	\$25.14
310-0005	Valve stem cap for C-138ST	\$17.18
310-0006	Stuffing box nut for C-138ST	\$5.73
310-1012	Valve stem cap for C-138	\$9.55
310-1015	Vandal proof lock shield, satin nickel	\$16.96
310-1019	Vandal proof lock shield, polished chrome	\$33.36
390-0001	Packing for C-138ST	\$2.07
390-1001	Packing for P-156	\$3.79
393-0001	Stuffing box packing for C-138ST	\$2.28
C-108KT-808	Loose key on lanyard for C-235/255	\$12.36
C-134KT-803	Packing kit for C-135/155/235/255, P-156	\$5.51
C-134KT-804	Loose key conversion kit for C-135/155	\$39.89
C-134KT-805	Handle and screw kit	\$8.88
C-135KT-802	Bibb washer and screw kit for C-135, P-156	\$3.22
C-135KT-805	Polished chrome handle and screw kit	\$13.99
C-138KT-801	T-handle and screw kit for C-138	\$9.67
C-234KT-804	Handle conversion kit for C-235/255	\$27.59
C-434KT-806	Old style vacuum breaker kit for C-155	\$29.64
C-434KT-906	Vacuum breaker kit for new style C-155	\$53.61

PARTS FOR BRASS DRAINAGE PRODUCTS

PART NO.	DESCRIPTION	LIST
400-0011	Locknut, brass for P-310/311	\$25.91
400-0012	Compression ring, brass for P-311	\$19.67
400-0015	Locknut, brass 1" for C-212	\$14.89
400-0016	Coupling nut, brass 1" for C-212	\$11.65
405-0001	Coupling nut, zinc for C-210	\$4.16
405-0002	Locknut, zinc for C-210	\$5.01
420-0001	Polished brass strainer for P-310/311/312	\$21.49
424-0002	Stainless steel strainer for P-310/311/312	\$11.04
425-0001	Compression ring key for P-311	\$16.32
430-0001	Plastic float ball for C-342	\$3.61
440-0001	Washer, sealing for C-210	\$8.52
440-0002	Washer, sealing for C-212	\$8.80
440-0003	Washer, coupling nut for C-212	\$1.87
440-0004	O-ring seal for C-342OR	\$0.86
440-0006	Sealing washer for P-310/311/312	\$4.17
440-0008	Self-caulk adapter for P-311CL	\$3.96
493-0001	Washer, fiber for P-310/311/312	\$10.94

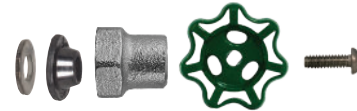
PARTS FOR CAST IRON DRAINAGE PRODUCTS

PART NO.	DESCRIPTION	LIST
401-0003	Clamping ring, threaded for A-110	\$31.77
401-0008	Clamping ring, bolt-down for B-110/102	\$36.14
P-315BR	Polished brass strainer assembly	\$63.96
P-315CP	Chrome plated strainer assembly	\$61.96
P-315KT-012	Chrome plated replacement top and screws	\$37.36
P-315KT-013	Polished brass replacement top and screws	\$42.88



HANDLE TO LOOSE KEY

PART NO.	DESCRIPTION	LIST
C-134KT-804	Loose key conversion kit for C-134, C-144, C-108, P-154, and P-164 series	\$39.89
C-434KT-804	Loose key conversion kit for C-434 series	\$48.98



LOOSE KEY TO HANDLE

PART NO.	DESCRIPTION	LIST
C-234KT-804	Loose key to handle kit for C-234, C-244, C-208, C-255, P-254 and P-264 series	\$27.59
C-534KT-804	Loose key to handle kit for C-534 series	\$34.08

KEY & HANDLE

PART NO.	DESCRIPTION	LIST
C-10	3 3/4" wheel handle for 3/8" square rod	\$12.90
C-162	4-way key wrench, 5/16" oval: 1/4", 3/8" or 1/2" connections	\$20.52

CUP PART KITS



PART NO.	DESCRIPTION	CUP QTY.	LIST	CUP LIST
C-134CP-802	OO bibb washer and screw kit (C-134, C-144, C-108, P-154, P-164)	12	\$4.32	\$51.84
C-134CP-803	Packing and washer kit (C-134, C-144, C-108, P-154, P-164)	12	\$5.51	\$66.12
C-134CP-804	Loose key conversion kit (C-134, C-144, C-108, P-154, P-164)	6	\$39.89	\$239.34
C-134CP-805	Handle and screw kit (C-134, C-144, C-108, P-154, P-164)	6	\$8.88	\$53.28
C-134CP-807	C-134 overhaul kit	6	\$10.98	\$65.88
C-144CP-806	C-144 and P-164 vacuum breaker repair kit	12	\$7.46	\$89.52
C-144CP-807	C-144 overhaul kit	6	\$15.90	\$95.40
P-164CP-805	Soft Grip Handle and screw kit (P-164, C-144, C-108, C-134)	6	\$11.49	\$68.94
P-164CP-807	P-164 overhaul kit	6	\$18.48	\$110.88
630-7500CP	Mansfield style vacuum breaker repair kit	12	\$7.46	\$89.52
630-7755CP	Mansfield style service kit	12	\$21.02	\$252.24
630-7965CP	Mansfield style handle and screw kit	5	\$10.82	\$54.10

*No broken quantities for cup part kits.

CROSS REFERENCE

RESIDENTIAL HYDRANTS

PRIER	WOODFORD	ARROWHEAD	ZURN	LEGEND
C-134	14	455/456	Z-1344	T-551
C-144	17/101	425BFP	Z-1345	T-552
P-164	N/A	N/A	N/A	T-550
300 Series	14	455/456	N/A	T-551
408 Series	N/A	465	N/A	N/A
478 Series	17	425BFP/485BFP	N/A	T-552
C-108	22/22V	496BFP	Z-1348-BFP	N/A
C-434	25/27	N/A	Z-1346	N/A

ANGLE SILL FAUCETS

PRIER	WOODFORD	ZURN	CHICAGO	CENTRAL BRASS
C-135	21	N/A	293	575
C-137	21	N/A	N/A	N/A
C-138	43	N/A	7 (discontinued)	5
C-155	24	Z-1341	N/A	N/A
C-235	N/A	N/A	293-6	576

COMMERCIAL HYDRANTS

PRIER	WOODFORD	JAY R. SMITH	ZURN	MIFAB
C-534	65	N/A	N/A	MHY-20
C-634	65/67	5609-5509QT	Z-1310	MHY-25
P-650	Y95	5830/5831	Z-1361	MHY-60/MHY-61
P-RH4	SRH-MS	5903	N/A	N/A

GROUND HYDRANTS

PRIER	WOODFORD	MERRILL	SIMMONS
C-240	X34	C-1000	4800
C-250	Y34	M-2000	800
P-260	Y34	E-5000	N/A
YH	R34	N/A	900
P-360	S3	N/A	6800-LF

*For additional cross reference information, please contact PRIER.

1 Edward B Lingel
 (781) 235-8044
 elingel16@aol.com
 Eastern MA, RI, NH, ME

2 Yost Associates
 (860) 659-0301
 yostassociates.com
 Western MA, VT, RI, CT

3 Nov-Ell Sales
 (973) 636-2900
 nov-ell.com
 Northern NJ, NYC

4 Northeast Sales Associates
 (585) 223-5982
 nesasales.com
 NY (Except NYC)

5 ProLineBK
 (215) 885-0440
 goplbk.com
 Southern NJ, Eastern PA

6 Musillo Sales
 (855) 461-4544
 musillosales.com
 WV, Western PA

7 Cathell and Associates
 (571) 313-1390
 cathell.com
 DE, MD, VA, Washington DC

8 Ludwig, Smith and Walker
 (704) 342-9690
 lswrep.com
 NC, SC

9 The Pointer Agency
 (800) 401-4870
 pointeragency.com
 GA

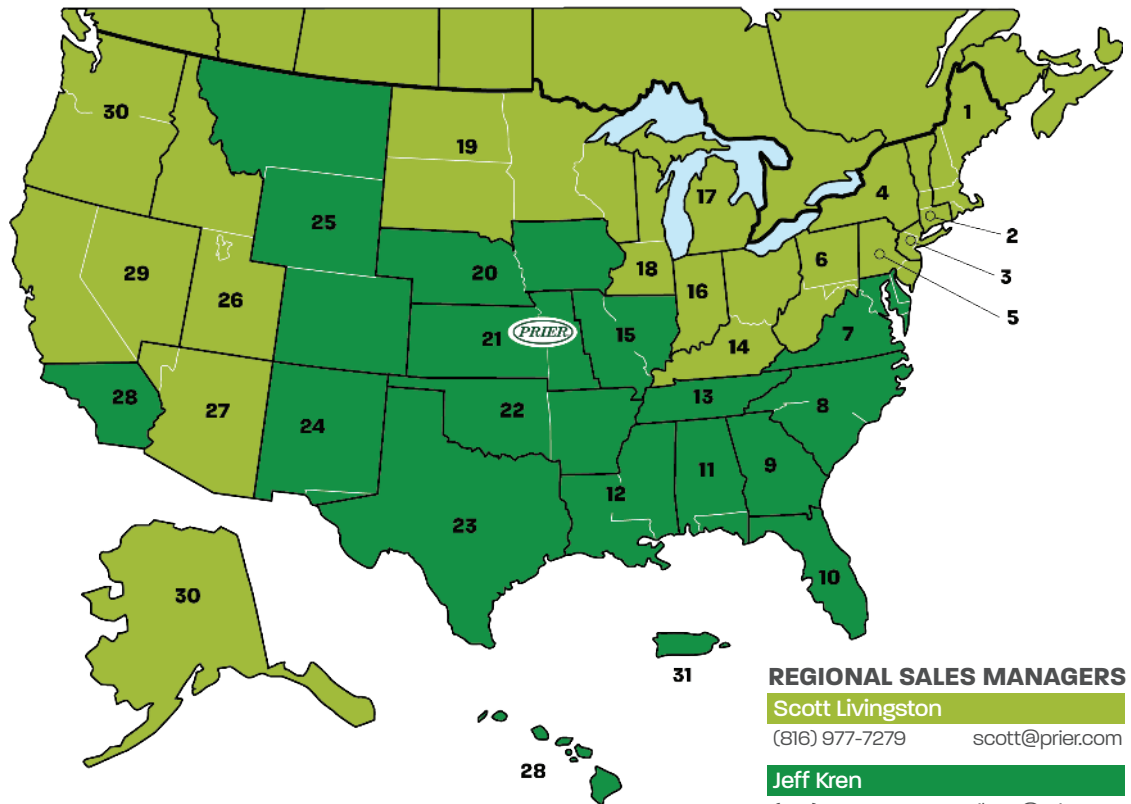
10 MACO Southeast
 (321) 295-4102
 macosoutheast.com
 FL (Except Panhandle)

11 Benton & Associates
 (205) 664-1221
 Fax (205) 664-1277
 AL, FL Panhandle

12 Will & Pierce Agency
 (800) 672-1626
 willandpierce.com
 LA, MS

13 FC2 Sales
 (901) 857-0357
 fc2sales.com
 TN

14 Lowder Sales
 (800) 221-5650
 lowdersales.com
 OH, KY



15 Hodes & Sutter
 (855) 451-7472
 hodesandsutter.com
 Eastern MO, Southern IL

16 Diversified Sales Group
 (317) 776-9535
 dsgrp.com
 IN

17 Major Lozuaway & Associates
 (810) 234-1635
 majorlozuaway.com
 MI

18 Hart, Travers & Associates
 (630) 261-1166
 htareps.com
 Northern IL, Eastern WI

19 Distributor Sales, Inc. (DSI)
 (651) 460-4661
 dsireps.com
 MN, Western WI, ND, SD

20 Big Rivers Marketing
 (402) 594-3953
 bigriversllc.com
 IA, NE

21 Hodes & Sutter
 (913) 451-7472
 hodesandsutter.com
 Western MO, KS

22 P.S.I.
 (405) 942-0609
 psiokc.com
 OK, AR

23 CWR, Inc.
 (281) 651-9500
 cwrrepstexas.com
 TX (Except El Paso)

24 Loving & Associates, Inc.
 (505) 299-1122
 loving-assoc.com
 NM, El Paso

25 KM Sales
 (303) 292-1355
 kmsales.com
 CO, WY, MT

26 Ben Cook West
 (801) 487-1754
 bencookwest.com
 UT, ID

27 MAS Sales, LLC
 (480) 329-2293
 massales-sw.com
 AZ, Las Vegas

28 Advantage Sales Force
 (714) 695-0503
 advantagesalesforce.com
 Southern CA, HI

REGIONAL SALES MANAGERS

Scott Livingston
 (816) 977-7279 scott@prier.com

Jeff Kren
 (773) 230-2644 jkren@prier.com

Customer Service
 (800) 362-9055 orders@prier.com

29 Kliman Sales
 (408) 275-1784
 klimansales.com
 Northern CA, Northern NV

30 Norpac, Inc.
 (253) 850-8800
 norpacinc.com
 WA, OR, AK

31 IABACO
 (787) 752-0200
 iabaco.com
 Puerto Rico



Build With Purpose

C-634 installs in half the time.

Tell your contractor to skip the chisel. The C-634 installs faster, flows more and hugs the wall. Your contractor and their knees will thank you.



Solid Heavy Duty Brass
Freezeless With or Without Hose
Patented Triple Seal Shutoff



Single Hole Installation
Flat Back Design
Included Wall Clamping Ring



Highest Flow Rate of 16 GPM
Tested to 250,000 Cycles
Self-draining with Hose Attached



BX1



BX2



BX3



RB1



3/8" Mounting Lugs



Exclusive Watertight Gasket

Optional Boxes - Garage Door Style. Lockable. Tilt-Up Construction.

Find us in



made in kansas city | PRIER.com

Live Customer Service Support 800-362-9055 | orders@prier.com