



Build With Purpose

# SUBMITTAL FORM P-RH4 Sanitary Roof Hydrant

JOB NAME \_\_\_\_\_

JOB LOCATION \_\_\_\_\_

PART NO# \_\_\_\_\_

ARCHITECT \_\_\_\_\_

ENGINEER \_\_\_\_\_

CONTRACTOR \_\_\_\_\_



Find us in

**MasterSpec**

a product of The American Institute of Architects



## ■ FEATURES

- Single hole penetration in roof of just 3 5/8"
- No winterization required, drain water contained within hydrant
- Standard 3/4" Garden Hose Outlet
- 1" NPT inlet
- High flow rate of 10 gallons per minute at 25 PSI differential

### Certifications

- ASSE 1057
- NSF 372

## ■ PART NUMBER

# P-RH4

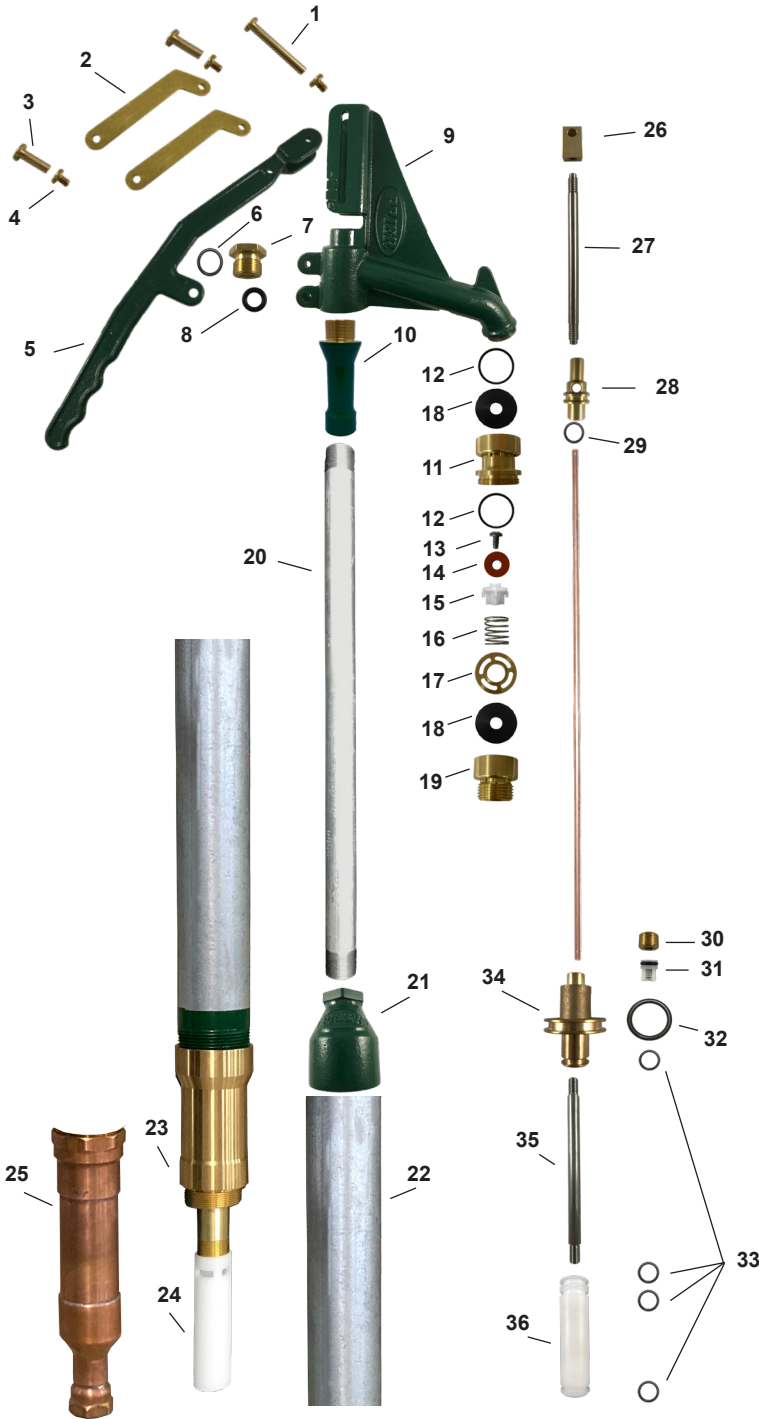
→ H4- Sanitary Roof Hydrant



Build With Purpose

# SUBMITTAL FORM P-RH4 Sanitary Roof Hydrant

## MATERIALS



ID	PART	MATERIAL
1	Long Handle Pin	Brass
2	Handle Link	Steel
3	Short Handle Pin	Brass
4	Handle Pin Screw	Brass
5	Handle	Cast Iron
6	O-Ring	EPDM
7	Handle Stem Seal Nut	Brass
8	O-Ring	EPDM
9	Hydrant Head	Cast Iron
10	Head Sealing Sleeve	Brass
11	Vacuum Breaker Upper Adapter	Brass
12	O-Ring	EPDM
13	Screw	Stainless Steel
14	Washer	Silicone
15	Poppet	Acetal
16	Actuator Spring	Stainless Steel
17	Slotted Spring Support Washer	Brass
18	Washer	EPDM
19	Vacuum Breaker Lower Hose Piece	Brass
20	Outer Pipe	Galvanized Steel
21	Flow Stem Cover Cap	Cast Iron
22	Flow Stem Cover	UV Resistant PVC
23	Drain Canister	Brass
24	Inlet Flow Control Housing	Acetal
25	Inlet Housing	Copper
26	Handle Stem Pivot Nut	Brass
27	Handle Stem	Stainless Steel
28	Flow Diverter	Brass
29	O-Ring	EPDM
30	NPT Plug	Brass
31	Check Valve	Composite
32	O-Ring	EPDM
33	O-Ring	EPDM
34	Drain Canister Piston	Brass
35	Vent Tube	Stainless Steel
36	Inlet Flow Control	Acetal

## SPECIFICATIONS

Furnish and install Model P-RH4 Sanitary Roof Hydrant manufactured by PRIER Products, Inc. It must be listed to ASSE 1057 and NSF 372 standards. This hydrant shall have freeze protection and a vacuum breaker/backflow preventer. Hydrant head shall be durable cast iron with freezeless water flow and self-contained draining functions. Hydrant must be multi-piston design and completely evacuate drain canister upon use. The hydrant shall have a 1" NPT inlet and does not require winterization or a drain line. The roof penetration is to be sealed by the roofing contractor in accordance with the roofing codes and condition in their municipality. Hydrant shall be installed through a 3 5/8" single penetration in the roof and mounted to the interior structure with the Roof Hydrant Mounting Bracket (P-RMB) provided. This bracket must be manufactured of heavy gauge powder-coated steel and must allow for adjustment to meet roof angles up to 2/12 pitch. The mounting bracket shall be attached to concrete, a roofing truss, steel I-beam or interior wall with standard construction materials (threaded rods, Unistrut or other).