



Build With Purpose

SUBMITTAL FORM P-360 Sanitary Bury Hydrant

JOB NAME

JOB LOCATION

PART NO#

ARCHITECT

ENGINEER

CONTRACTOR



Find us in

MasterSpec

a product of The American Institute of Architects



FEATURES

- No winterization required, excess drain water contained within hydrant
- Standard 3/4" garden hose outlet
- 1" NPT inlet
- High flow rate of 10 gallons per minute at 25 PSI differential

Certifications

- ASSE 1057
- NSF 372

PART NUMBER

P-360-3

Bury Depth

- 1- 1' Bury Depth 4- 4' Bury Depth 7- 7' Bury Depth
 2- 2' Bury Depth 5- 5' Bury Depth
 3- 3' Bury Depth 6- 6' Bury Depth

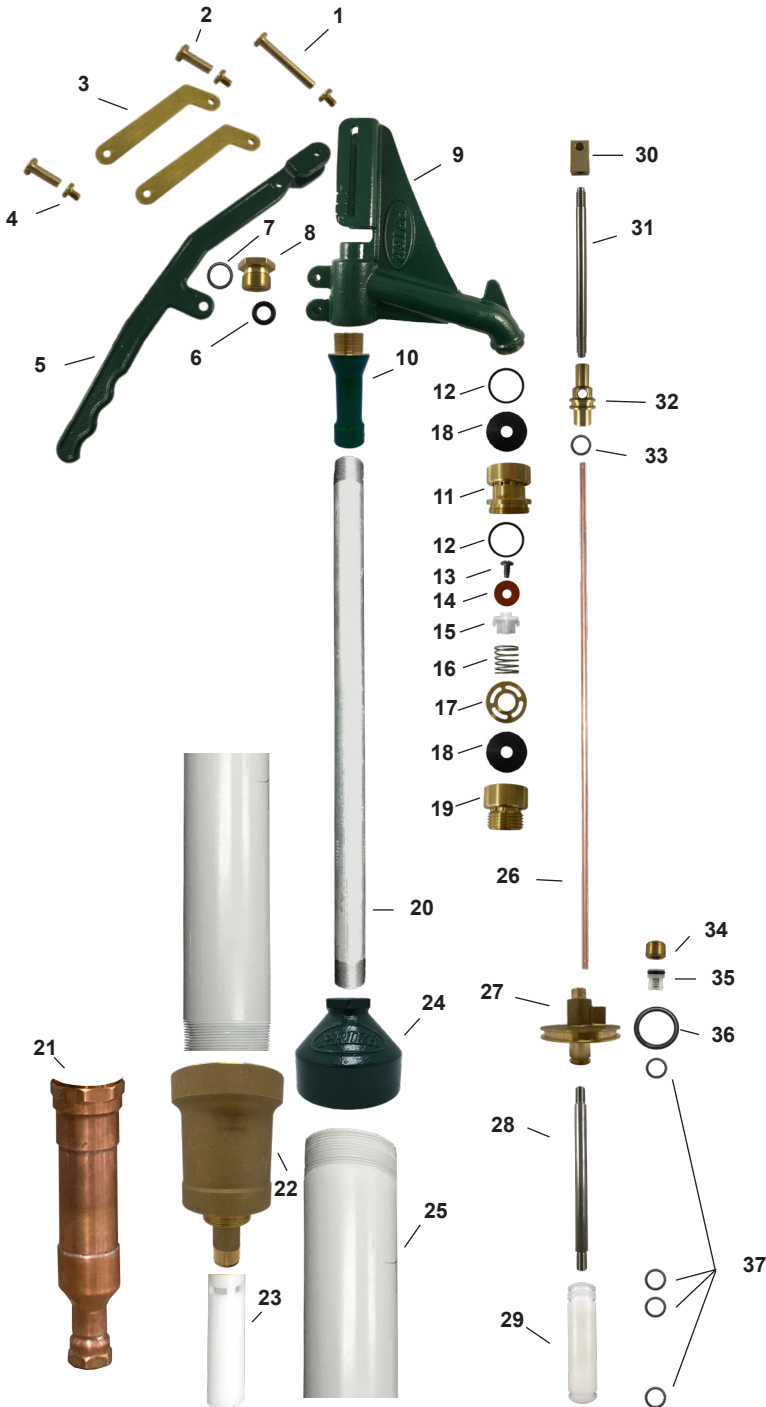
Part No.	Size	Overall Length	Weight Ea.
P-360-1	1' Bury	63in	22 lbs
P-360-2	2' Bury	75in	24 lbs
P-360-3	3' Bury	87in	26 lbs
P-360-4	4' Bury	99in	27 lbs
P-360-5	5' Bury	111in	28 lbs
P-360-6	6' Bury	123in	30 lbs
P-360-7	7' Bury	135in	35 lbs



Build With Purpose

SUBMITTAL FORM P-360 Sanitary Bury Hydrant

MATERIALS



ID	PART	MATERIAL
1	Long Handle Pin	Brass
2	Short Handle Pin	Brass
3	Handle Link	Steel
4	Handle Pin Screw	Brass
5	Handle	Cast Iron
6	O-Ring	EPDM
7	O-Ring	EPDM
8	Handle Stem Seal Nut	Brass
9	Hydrant Head	Cast Iron
10	Head Sealing Sleeve	Brass
11	Vacuum Breaker Upper Adapter	Brass
12	O-Ring	EPDM
13	Screw	Stainless Steel
14	Washer	Silicone
15	Poppet	Acetal
16	Actuator Spring	Stainless Steel
17	Slotted Spring Support Washer	Brass
18	Washer	Silicone
19	Vacuum Breaker Lower Hose Piece	Brass
20	Outer Pipe	Galvanized Steel
21	Inlet Housing	Copper
22	Drain Canister	Brass
23	Inlet Flow Control Housing	Acetal
24	Earth Guard Cap	Cast Iron
25	Earth Guard	UV Resistant PVC
26	Stem	Copper
27	Drain Canister Piston	Brass
28	Vent Tube	Stainless Steel
29	Inlet Flow Control	Acetal
30	Handle Stem Pivot Nut	Brass
31	Handle Stem	Stainless Steel
32	Flow Diverter	Brass
33	O-Ring	EPDM
34	NPT Plug	Brass
35	Check Valve	Composite
36	O-Ring	EPDM
37	O-Ring	EPDM

SPECIFICATIONS

Furnish and install Model P-360 Sanitary Lead Free Bury Hydrant manufactured by PRIER Products, Inc. It must be listed to ASSE 1057 and NSF 372 standards. This hydrant shall have freeze protection and a vacuum breaker/backflow preventer. Hydrant head shall be durable cast iron with freezeless water flow and self-contained draining functions. Hydrant must be multi-piston design and completely evacuate drain canister upon use. The hydrant shall have a 1" NPT inlet, does not require winterization.