



# SUBMITTAL FORM C-534 Commercial Wall Hydrant

JOB NAME \_\_\_\_\_

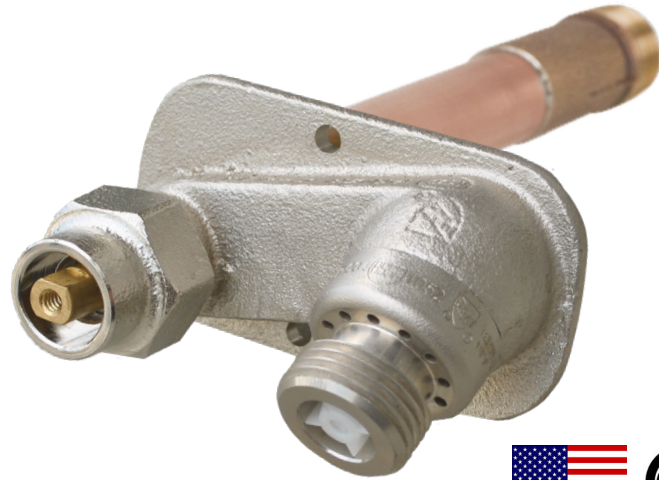
JOB LOCATION \_\_\_\_\_

PART NO# \_\_\_\_\_

ARCHITECT \_\_\_\_\_

ENGINEER \_\_\_\_\_

CONTRACTOR \_\_\_\_\_



**MasterSpec®**

## FEATURES

- Integral P-004 vacuum breaker and dual check valve
- Tested to 250,000 cycles; designed to last the life of the plumbing system
- 9 Gallons Per Minute at 25 PSI differential
- Patented PRIER "triple seal" positive shutoff system offers triple redundancy to assure shutoff

### Certifications

- ASSE 1052
- C-UPC
- ASME A112.18.1
- CSA B125.1-12

## PART NUMBER

# C-534D10

### Inlet

- D- 1/2" MPT x 1/2" SWT
- T- 3/4" MPT x 1/2" FPT
- F- 3/4" SWT
- X- 1/2" Crimp PEX
- W- 1/2" Wirsbo® PEX
- FX- 3/4" Crimp PEX
- FW- 3/4" Wirsbo® PEX

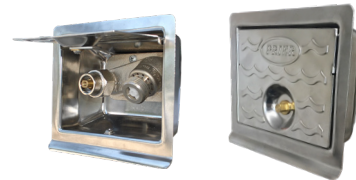
### Length

- CC- Close Coupled
- 04- 4" Insertion
- 06- 6" Insertion
- 08- 8" Insertion
- 10- 10" Insertion
- 12- 12" Insertion
- 14- 14" Insertion
- 16- 16" Insertion
- 18- 18" Insertion
- 20- 20" Insertion
- 22- 22" Insertion
- 24- 24" Insertion
- XX- Special Size

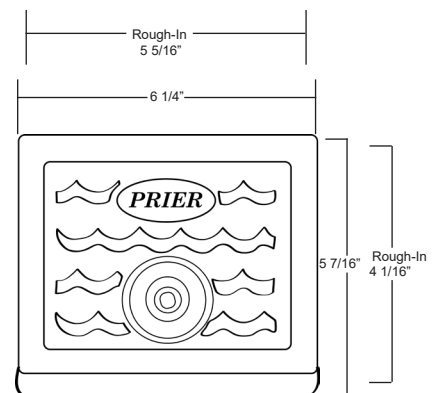
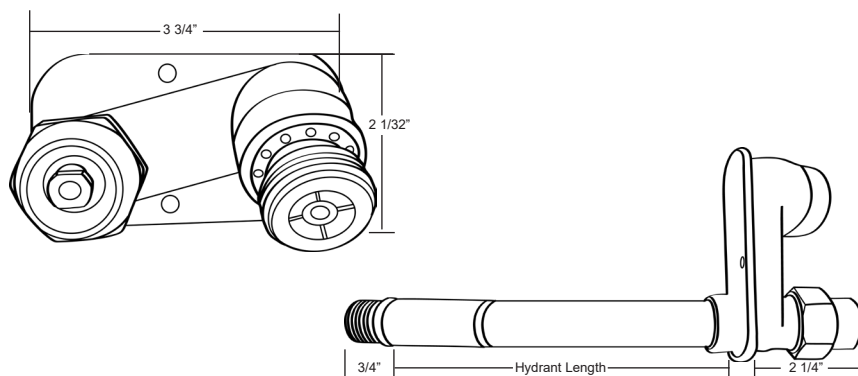
# C-534BX4

### Optional Box Finish

- 4- Stainless Steel



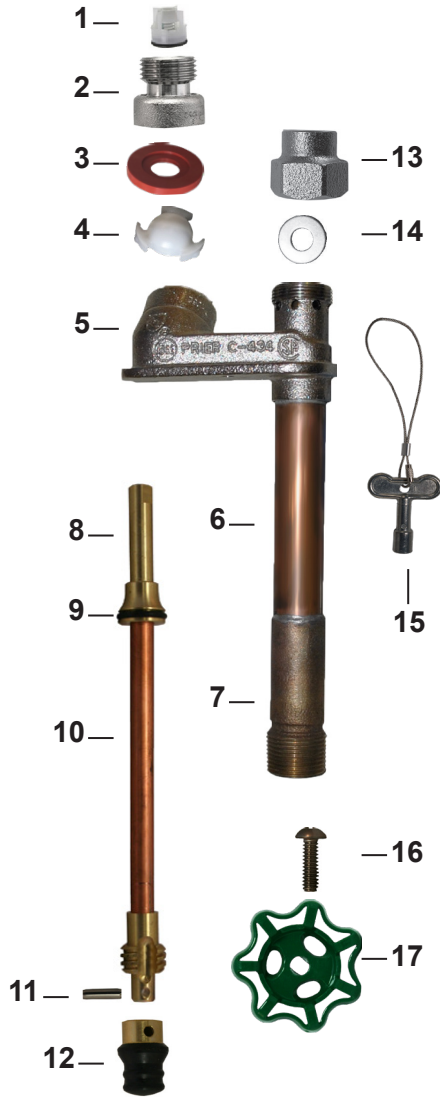
## DIMENSIONS





# SUBMITTAL FORM C-534 Commercial Wall Hydrant

## ■ MATERIALS



ID	PART	MATERIAL
1	Check Valve	Composite
2	Hose Piece	Brass
3	Washer	Silicone
4	Check Spider	Acetal
5	Body	Brass
6	Stem	Copper
7	Seat	Brass
8	Stem End	Brass
9	O-Ring	EPDM
10	Stem	Copper
11	Pin-Coiled Spring	Stainless Steel
12	Triple Seal Stopper	EPDM
13	Valve Stem Cap	Brass
14	Washer	Stainless Steel
15	Loose Key	Zinc
16	Screw	Stainless Steel
17	Handle	Aluminum

## ■ SPECIFICATIONS

Furnish and install freezeless model C-534 Commercial Wall Hydrant as manufactured by PRIER Products, Inc. Hydrant shall have automatic draining capabilities with integral ASSE 1052 approved double check vacuum breaker/backflow preventer. Hydrant shall have 3/4" hose connection with freezeless water flow and self-draining functions. After hydrant is turned in the "off" position, hydrant must be capable of draining even with the hose attached and under pressure without sprayback. Hydrant shall be constructed of all non-ferrous materials with EPDM sealing mechanisms. Hydrant body must be satin nickel plated. For stability of operation, hydrant stem shall be secured at the seat end with ACME type threads and at the handle end with the packing nut. Lockshield must be long enough to ensure operation only with the included operating key. Hydrant must be installed through a 1 1/8" diameter hole without any custom brick cutting. Operating Key is to be furnished with each hydrant. Hydrant insertion length to be \* inches. \*Close coupled to 24" in 2" increments.