

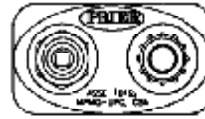


4515 East 139th Street
 Grandview, MO 64030
 (800) 362-9055
 Fax (800) 362-1463

INSTALLATION, OPERATION & MAINTENANCE INSTRUCTIONS FOR PRIER C-634 HEAVY COMMERCIAL WALL HYDRANTS

INSTALLATION:

1. Determine the location for installation of the Freezeless Hydrant. Be sure there is adequate work area on the interior of the structure for securing the Freezeless Hydrant to the waterline.
2. The Prier C-634 is designed for installation in either horizontal or vertical position. If using vertical installation, it is recommended that the hydrant be installed with the hose threads in the "up" position. Refer to drawings to the right for correct installations.
3. Using the template provided on the box, bore a $1 \frac{3}{8}$ " diameter hole through the wall in the desired position, and a $\frac{1}{4}$ " hole that is $\frac{1}{2}$ " deep.
4. If planning to solder the Freezeless Hydrant to the supply piping, remove the operating stem before applying heat to the valve. Heating the valve will damage the sealing surfaces on the stem of the Freezeless Hydrant.
5. Flush all foreign particles from the water line before connecting the Freezeless Hydrant. Foreign particles may clog the vacuum breaker/backflow preventor causing it to fail.
6. Insert the Freezeless Hydrant through the previously bored hole and secure the hydrant to the inside of the wall with the provided wall clamping ring.
7. Secure the Freezeless Hydrant to the supply piping. Test the installation for leakage.



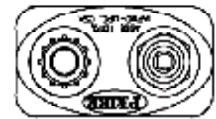
Recommended



Acceptable



Not Recommended



Acceptable

OPERATION:

The operation of a Prier C-634 Freezeless Wall Hydrant is simple. The Freezeless Hydrant will begin to flow at about 1 full turn of the key and will achieve maximum flow at $2 \frac{1}{2}$ full turns.

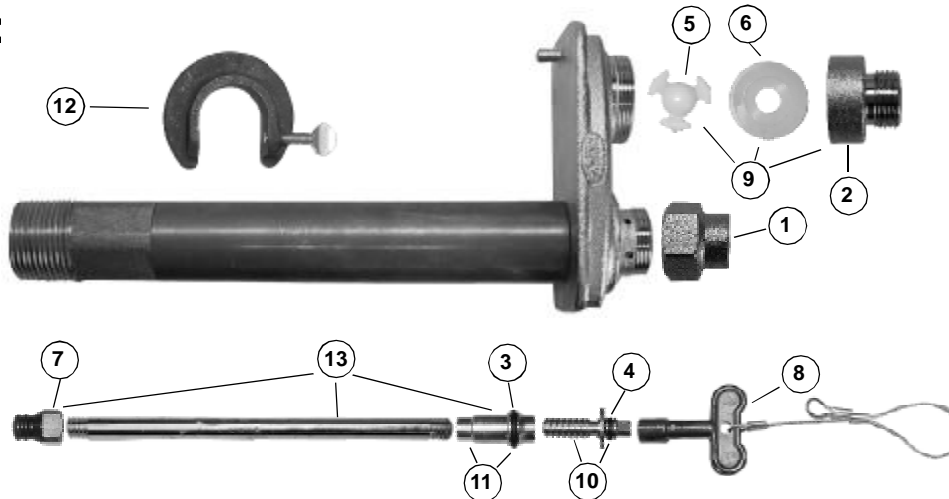
After shutoff, the hydrant will drain water from behind the packing nut. If the water drains for more than 1 minute, the stopper may need to be replaced.

Do not overturn when opening or closing the hydrant!

MAINTENANCE:

The Prier C-634 Freezeless Wall Hydrant requires no scheduled maintenance for long wear life. If the operating stem is removed, replacement of the O-Ring on the worm sleeve and worm drive is recommended.

PARTS:



ID	Part No.	Description
1	300-6003	Valve Stem Cap-Brass
2	300-6004	Hose Piece-Brass
3	336-0001	O-Ring for Worm Sleeve Buna
4	336-6001	O-Ring for Worm Drive Buna
5	337-6001	Stop Check-Acetal
6	346-6001	VB Check Washer-Silicone
7	399-6001	Stopper-Brass & EPDM
8	C-108KT-808	Operating Key on Lanyard
9	C-634KT-806	Vacuum Breaker Check Valve Assy
10	C-634KT-809	Worm Drive Assembly-Brass
11	C-634KT-808	Worm Sleeve Assembly-Brass
12	C-634WCR	Wall Clamp Ring-Iron
13	231-06CC	Stem for Close Coupled C-634
	231-0604	Stem for 4" C-634
	231-0606	Stem for 6" C-634
	231-0608	Stem for 8" C-634
	231-0610	Stem for 10" C-634
	231-0612	Stem for 12" C-634
	231-0614	Stem for 14" C-634
	231-0618	Stem for 18" C-634
	231-0624	Stem for 24" C-634