



4515 East 139th Street  
 Grandview, MO 64030  
 (800) 362-9055  
 Fax (800) 362-1463  
[www.PRIER.com](http://www.PRIER.com)

## 408 Series Wall Hydrant

### Internal Vacuum Breaker



- Residential
- Freezeless
- Anti-Siphon
- Backflow Check Valve



Application

Prier 408 Series provides a year round source of water to areas of structures that are subject to freezing temperatures. The hydrant valve is connected to the supply piping in the heated portion of the structure, eliminating the possibility of freezing. The Prier 408 Series features Half-Turn Design for years of easy operation.

The Prier 400 Series has all the characteristics of the proven historically proved 300 Series Wall Hydrant, with the added protection of an integral Vacuum Breaker and Backflow Preventor. Prier's design incorporates the Vacuum Breaker and Backflow Preventor into the operating stem, eliminating an external vacuum breaker on top of the valve.

Features

- ASSE 1019 & UPC Listed & Labeled
- Internal Vacuum Breaker & Backflow Preventor
- Easy Half-Turn Operation
- Integral Cast Backflange
- 6 Different Inlet Options
- Standard lengths from 4" to 14"
- Wide screwholes easily secure mounting screws
- Siding Wedge included with each valve.
- Solid Brass Body and Seat
- Satin Nickel Plated Body maintains finish indefinitely
- Easy Grip polycarbonate operating Handle
- Stainless Steel Handle Screw
- Full Circle Seat Threads secure Stem to Seat End
- AFG Teflon & Graphite Packing for easy maintenance
- Each Valve air-tested at Factory for leak free quality
- Manufactured in Grandview, Missouri
- Machined Spout Aligning Mark
- Field repairable with no special tools

Ordering



# 408-10

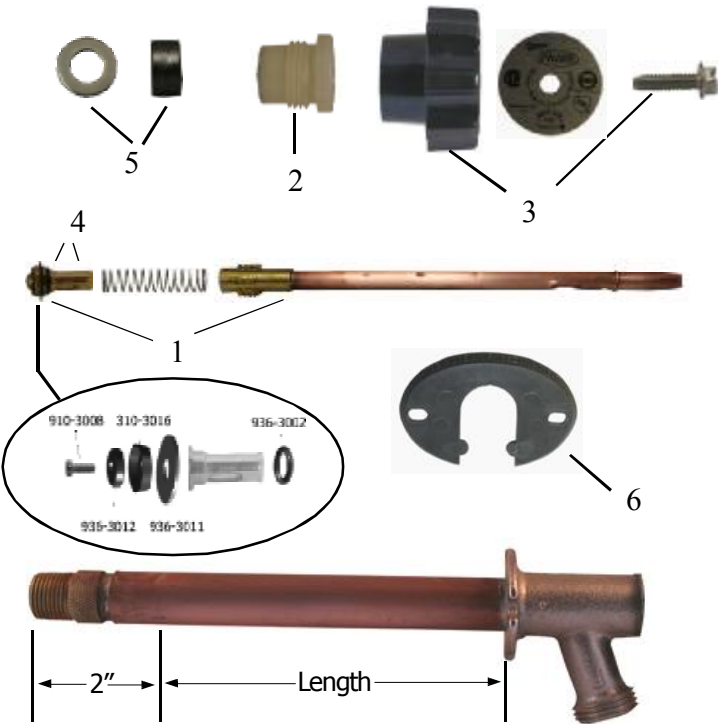
↓	↓	→
<b>Inlet</b>		<b>Length</b>
08-1/2" MPT x 1/2" SWT		04-4" Insertion
09-3/4" MPT x 1/2" FPT		06-6" Insertion
10-1/2" CPVC		08-8" Insertion
12-3/4" MPT x 3/4" SWT		10-10" Insertion
20-1/2" Crimp PEX		12-12" Insertion
21-1/2" Wirsbo PEX		14-14" Insertion



4515 East 139th Street  
 Grandview, MO 64030  
 800-362-9055  
 Fax 800-362-1463

# 408 Series

## Parts for 408 Series Wall Hydrants



ID	Part No.	Description
1	123-4090	Stem for 4" 400 Series ~8" OAL
	123-4092	Stem for 6" 400 Series ~10" OAL
	123-4093	Stem for 8" 400 Series ~12" OAL
	123-4094	Stem for 10" 400 Series ~14" OAL
	123-4095	Stem for 12" 400 Series ~16" OAL
	123-4096	Stem for 14" 400 Series ~18" OAL
2	337-3001	Valve Stem Cap-Left Hand Thread
3	630-7965	Handle & Screw Kit
2,4,5	630-7755	Service Kit for 400/500-All wearing parts
6	337-3012	Spacer Wedge-Grey



Removable Inspection Collar