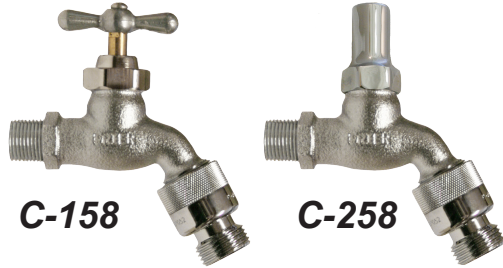




4515 East 139th Street
 Grandview, MO 64030
 (800) 362-9055
 Fax (800) 362-1463
 www.PRIER.com

Anti-Siphon Hose Bibbs

With Integral P-002 Vacuum Breaker



- Commercial
- Anti-Siphon
- Backflow Check Valve
- Solid Cast Brass



PRIER Anti-Siphon Hose Bibbs are designed for areas that require water service with an anti-siphon backflow check valve connection, but are not subject to freezing temperatures. Typical installations include outdoor connections in mild climates or any indoor installation for residential, commercial, institutional and industrial applications.

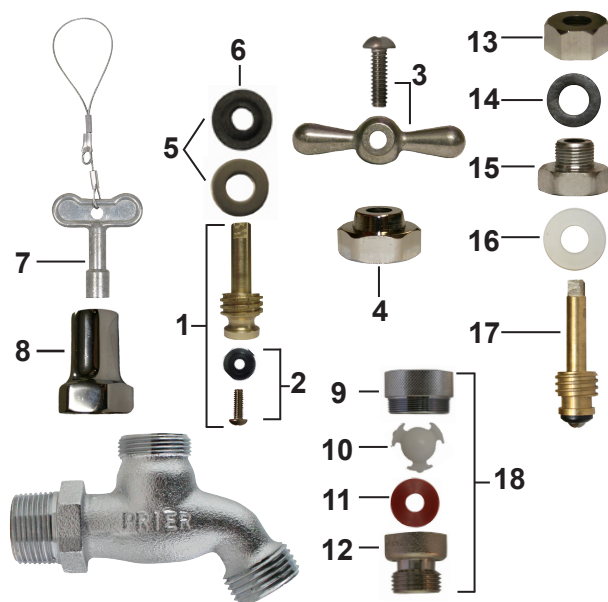
- Heavy pattern cast brass construction
- Satin nickel chromium finish
- Vandalproof lock shield cap on C-258 model
- Diecast aluminum t-handle or operating key on loose key hose bibbs
- Stainless steel seat washer screw and handle screw
- Full circle ACME threads on stem assembly with standard 1/4" L size seat washer
- AFG teflon with graphite packing
- P-002 vacuum breaker backflow check valve approved under ASSE 1011 and CSA B64.2

C-158NP.50

Operator
 1- Handle
 2- *Loose Key

Finish
 NP- Satin Nickel Plated
 ST- Nickel Chrome Plated, Stuffing Box Packing (*Not available in Loose Key)

Inlet Size
 50- 1/2"
 75- 3/4"



ID	Part No.	Description
1	231-0001	Stem Assembly, Rod (Brass)
2	C-134KT-802	Seat Washer Kit, 1/4" Beveled
3	C-138KT-801	T-Handle and Screw Kit
4	310-1012	Valve Stem Cap
5	C-134KT-803	Stem Packing Kit
6	390-1001	Packing Only
7	C-108KT-808	Loose Key on Lanyard
8	310-1019	Extended Valve Stem Cap (Polished Chrome)
9	310-0023	P-002 Adapter
10	337-0002	Check Spider (Acetal)
11	336-0006	Stepped Washer (Silicone)
12	310-0018	Vacuum Breaker Hose Piece
13	310-0006	Stuffing Box (C-158ST)
14	393-0001	Stuffing Box Packing (C-158ST)
15	310-0005	Packing Nut (C-158ST)
16	390-0001	Packing Spacer (C-158ST)
17	231-0002	Stem Assembly (C-158ST)
18	P-002CP	Hose End Vacuum Breaker
	C-434KT-906	Vacuum Breaker Assembly, Contains, 10, 11, 12
	C-134KT-804	Loose Key Conversion Kit, Contains: 5, 7, 8

Application

Features

Ordering

Replacement Parts