



Build With Purpose

SUBMITTAL FORM P-RH1 Flush Mount Roof Hydrant

JOB NAME _____

JOB LOCATION _____

PART NO# _____

ARCHITECT _____

ENGINEER _____

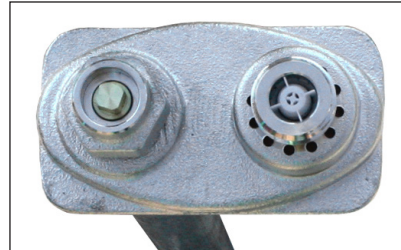
CONTRACTOR _____



Find us in

MasterSpec

a product of The American Institute of Architects



top view



FEATURES

- With Integral P-004 Vacuum Breaker and Dual Backflow Preventer
- Patented PRIER "triple seal" positive shutoff system offers triple redundancy to assure shutoff
- High flow rate, 15 gallons per minute at 25 PSI differential
- Adjustable bracket to accommodate roof angles up to 2/12 pitch

Certifications

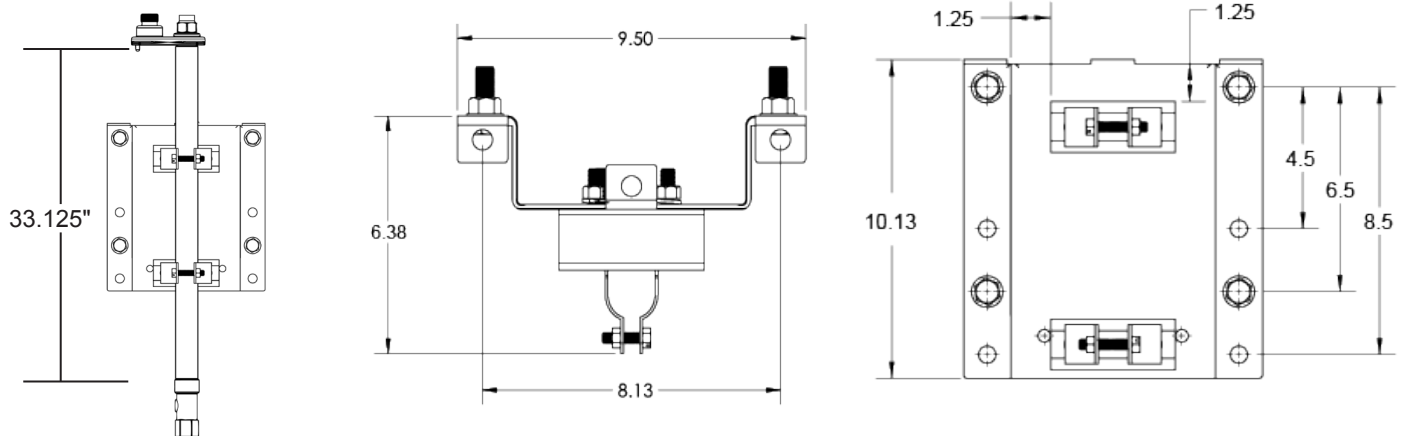
- ASSE 1052
- C-UPC
- CSA B64.2
- ASME B1.20.1

PART NUMBER

P-RH1

→ H1- Flush Mount Roof Hydrant
Includes Roof Hydrant Mounting Bracket

DIMENSIONS

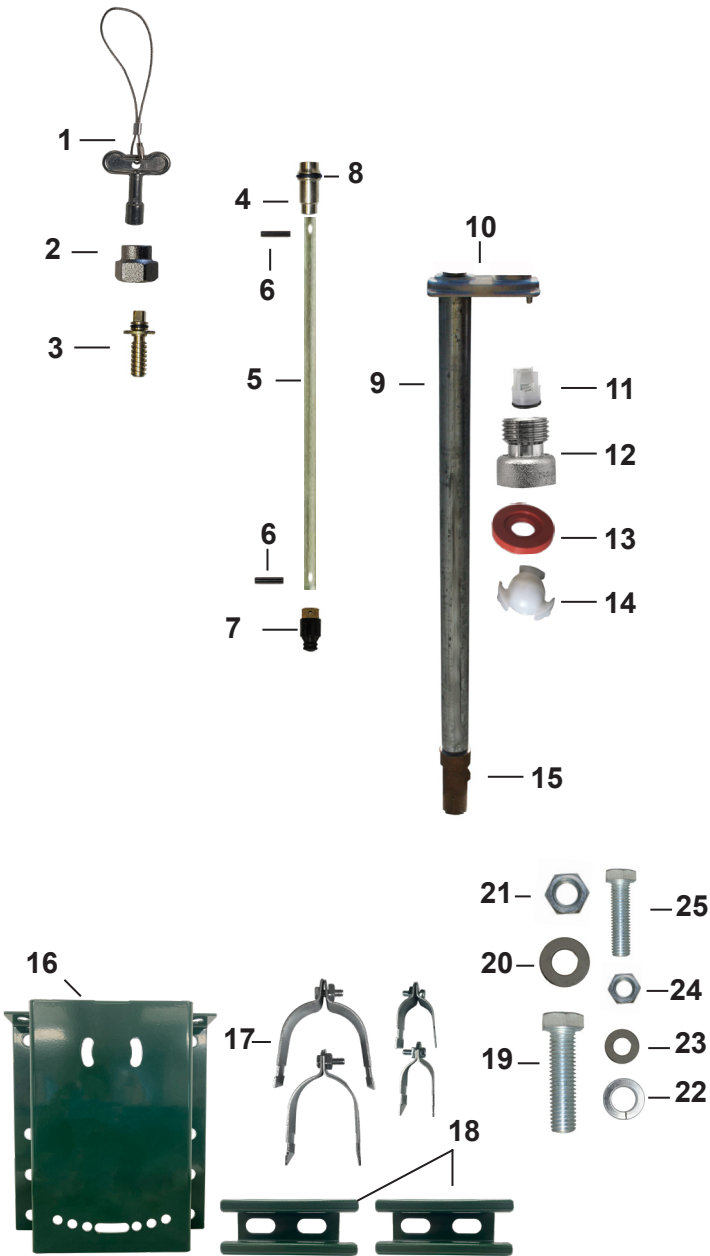




Build With Purpose

SUBMITTAL FORM P-RH1 Flush Mount Roof Hydrant

MATERIALS



ID	PART	MATERIAL
1	Loose Key	Zinc and Aluminum
2	Valve Stem Cap	Brass
3	Worm Drive	EPDM and Brass
4	Worm Sleeve	EPDM and Brass
5	Stem	Brass
6	Stopper Pin	Stainless Steel
7	Stopper	EPDM and Brass
8	O-Ring	EPDM
9	Body	Galvanized Steel
10	Head	Brass
11	Check Valve	Neoperl
12	Hose Piece	Brass
13	Washer	Silicone
14	Check Spider	Acetal
15	Seat	Brass
16	Mounting Bracket	Powder Coated Steel
17	1" Pipe Clamp Assembly for P-RH1, P-RH2, P-RH3	Zinc Plated Steel
	2 1/2" Pipe Clamp Assembly for P-RH4	Zinc Plated Steel
18	Unistrut Steel Struts	Powder Coated Steel
19	1/2" Mounting Bolt	Zinc Plated Steel
20	1/2" Flat Washer	Zinc Plated Steel
21	1/2" Mounting Nut	Zinc Plated Steel
22	3/8" Lock Washer	Zinc Plated Steel
23	3/8" Flat Washer	Zinc Plated Steel
24	3/8" Hex Nut	Zinc Plated Steel
25	3/8" Bolt	Zinc Plated Steel

SPECIFICATIONS

Furnish and install Model P-RH1 Commercial Flush Mount Roof Hydrant manufactured by PRIER Products, Inc. Hydrant shall be installed through a 1 3/4" single penetration in the roof and mounted to the interior structure with the Universal Roof Hydrant Mounting Bracket (P-RMB) provided. This bracket must be manufactured of heavy gauge powder coated steel and must allow for adjustment to meet roof angles up to 2/12 pitch. The mounting bracket shall be mounted to concrete, a roofing truss, steel I-beam or interior wall with standard construction materials (threaded rod, Unistrut or other). The hydrant shall be flush mounted and have automatic draining capabilities with integral vacuum breaker/backflow preventer. Hydrant head and inlet shall be brass with freezable water flow and self draining functions, one piece valve plunger, satin nickel finish and a triple-seal shut off mechanism. Hydrant shall be capable of flowing a minimum of 15 gallons per minute at 25 PSI differential. The hydrant shall have a 3/4" inlet and a 1/8" NPT drainage port to be connected to the drain waste line inside the structure. Hydrant shall be approved under the ASSE 1052 standard. The roof penetration is to be sealed by the roofing contractor in accordance with the roofing codes and conditions in their municipality.