



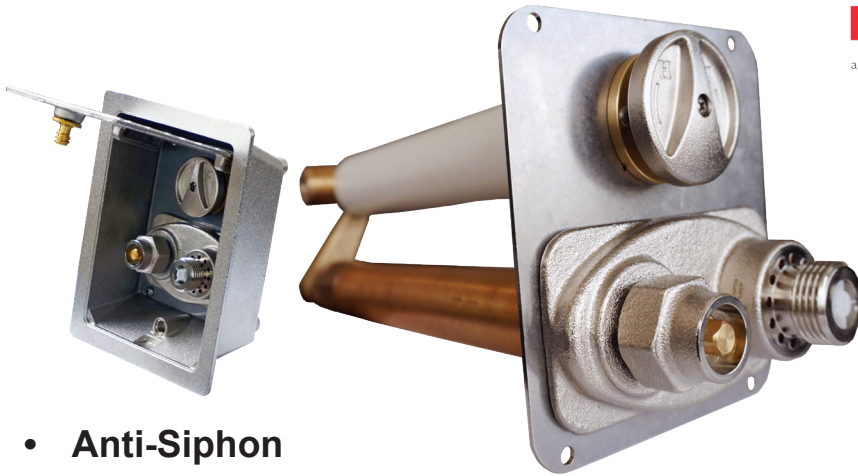
P-754 Commercial Hot & Cold Wall Hydrant

Find us in

MasterSpec[®]



a product of The American Institute of Architects



- **Anti-Siphon**
- **Freezeless**
- **Commercial / Industrial**
- **Hot & Cold Mixing**

PRIER P-754 provides a year round source of tempered water to areas that are subject to freezing temperatures. The hydrant valve is connected to the supply piping in the heated portion of the structure, eliminating the possibility of freezing. To assure freeze protection, the hydrant will drain even with the hose attached and under pressure.

The integral vacuum breaker/backflow preventer provides protection against cross-contamination with the potable water system, utilizing a double check valve to prevent back pressure and a vacuum breaker to vent in the case of upstream pressure drop. A removable operating key is provided to prevent unauthorized usage of the hydrant. No special installation tools are required.

FEATURES

- Field testable as required by ASSE 1052, pressure rated to 125 PSI, temperature to 140°
- Satin nickel plated body maintains an original finish
- Multiple vent holes ensure proper draining and reduce problems associated with insect nesting
- Patented PRIER "triple seal" positive shutoff system offers triple redundancy to assure shutoff
- High flow rate, 16 gallons per minute at 25 PSI differential
- Same key operates box lock and hydrant
- Heavy pattern cast brass hydrant for use with or without brass box
- Heavy duty brass piping, significantly stronger than ordinary copper tubing, with threaded and sealed joints
- Patented PRIER quick opening and modulating design require less force and fewer turns to operate
- Single control temperature dial
- Simple, robust design and solid temperature control rods for long wear life
- Box design enables valve to be easily secured to any type of inner wall, utilizing integral 3/8"-16 lugs
- 4 mounting holes on valve's backplate provide for an even and secure installation without a hydrant box
- Check Valves prevent inlet thermal migration
- Maintenance is serviceable from the front of the valve without removing from wall
- PVC pipe included to protect temperature control shaft during installation and from mortar, foam insulation, etc

ORDERING

Wall Hydrant Only

P-754M10

Hose Thread Outlet	Inlet	Length	
4- 3/4" Garden Hose	M- 3/4" MPT	CC- Close Coupled	16- 16" Insertion
6- 1" Hose		04- 4" Insertion	18- 18" Insertion
		06- 6" Insertion	20- 20" Insertion
		08- 8" Insertion	22- 22" Insertion
		10- 10" Insertion	24- 24" Insertion
		12- 12" Insertion	XX- Special Size
		14- 14" Insertion	

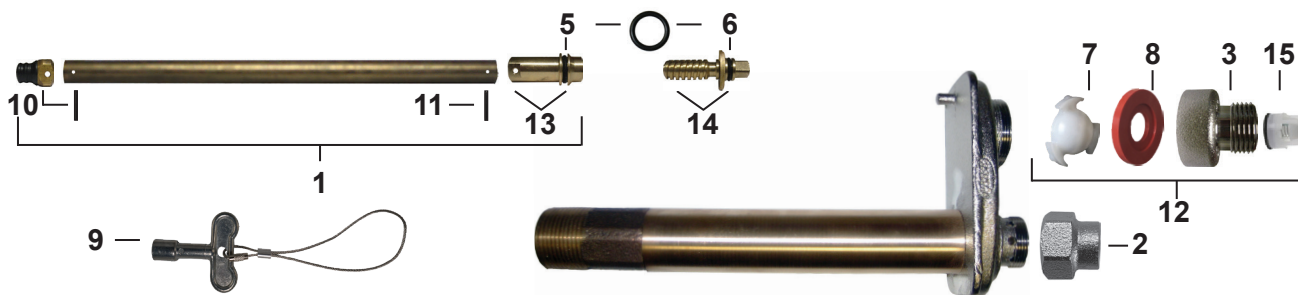
Optional Hydrant Box

P-754BX1



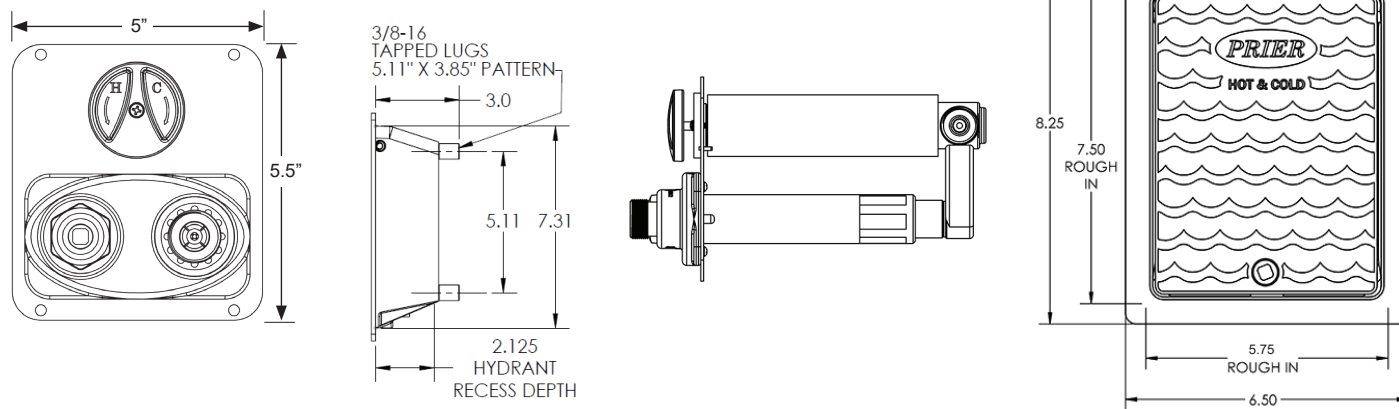
Box Finish
BX1- Satin Nickel Plated

P-754 REPLACEMENT PARTS AND STEMS



ID	Part No.	Description	ID	Part No.	Description
1	See Below	Stem Assembly, Contains: 10, 11, 13		310-6009	1" Hose Piece for C-636 (NP Brass)
	P-231-0604	Stem for 4" C-634 Hydrant, 4 11/16" OAL	5	336-0001	O-Ring Worm Sleeve
	P-231-0606	Stem for 6" C-634 Hydrant, 6 11/16" OAL	6	336-6001	O-Ring Worm Drive
	P-231-0608	Stem for 8" C-634 Hydrant, 8 11/16" OAL	7	337-6001	Check Spider-Vacuum Breaker
	P-231-0610	Stem for 10" C-634 Hydrant, 10 11/16" OAL	8	346-6001	Diaphragm-Vacuum Breaker
	P-231-0612	Stem for 12" C-634 Hydrant, 12 11/16" OAL	9	C-108KT-808	Loose Key on Lanyard
	P-231-0614	Stem for 14" C-634 Hydrant, 14 11/16" OAL	10	C-634KT-802	Stopper Kit, Includes Stopper and Pin, O-Ring
	P-231-0616	Stem for 16" C-634 Hydrant, 16 11/16" OAL	11	324-0004	Pin Only
	P-231-0618	Stem for 18" C-634 Hydrant, 18 11/16" OAL	12	C-634KT-806	Vacuum Breaker Assembly
	P-231-0620	Stem for 20" C-634 Hydrant, 20 11/16" OAL	13	C-634KT-808	Worm Sleeve with O-Ring, Pin and Tool
	P-231-0622	Stem for 22" C-634 Hydrant, 22 11/16" OAL	14	C-634KT-809	Worm Drive Assembly with O-Ring
	P-231-0624	Stem for 24" C-634 Hydrant, 24 11/16" OAL	15	399-0001	Secondary Check for ASSE 1052
2	300-6003	Valve Stem Cap (NP Brass)		C-634KT-807	C-634 Overhaul Kit, Contains: 9, 10, 11, 12, 13, 14
3	300-6004	3/4" Hose Piece (NP Brass)			

ROUGH-IN DIMENSIONS



SPECS

Furnish and install Model P-754 Heavy Commercial Wall Hydrant manufactured by PRIER Products, Inc. Hydrant shall have automatic draining capabilities with integral vacuum breaker/double backflow preventer. Hydrant shall flow 16 gallons per minute minimum at 25 PSI Differential and be at full flow in 2 handle rotations. Hydrant shaft shall be brass with threaded and sealed connections. Hydrant shall have 3/4" or 1" (choose one) hose connection with freezeless water flow and self-draining functions, one piece valve plunger, satin nickel finish, brass operating rod with positive triple seal shutoff mechanism. Hydrant shall be approved under ASSE 1052 standard. Operating key to be furnished with each hydrant. Hydrant insertion length to be x inches. (Close Coupled to 24" in 2" increments.)

Optional: Furnish and install flush-mount hydrant box for each valve. Hydrant box shall be manufactured of solid cast brass. Box may be installed separately and hydrant be insertable and removable from front of the box. Access to the hydrant box shall be provided by the same operating key as the valve.