



SUBMITTAL FORM C-634 Heavy Commercial Wall Hydrant

JOB NAME _____

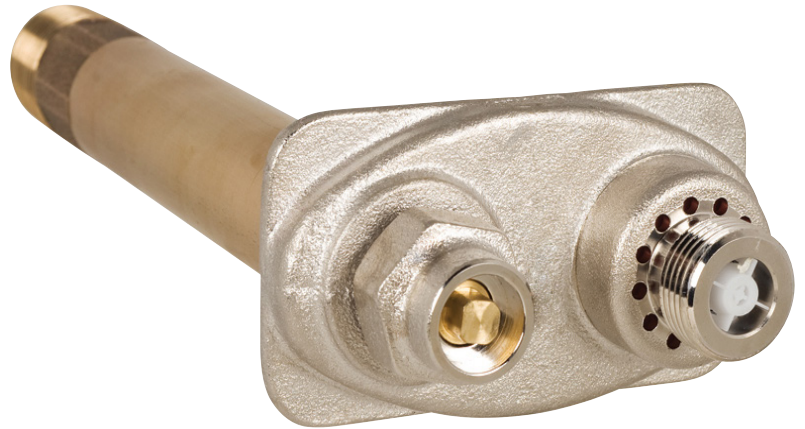
JOB LOCATION _____

PART NO# _____

ARCHITECT _____

ENGINEER _____

CONTRACTOR _____



FEATURES

- Field testable as required by ASSE 1052, pressure rated to 125 PSI, temperature to 140°
- Integral P-004B Vacuum Breaker and Dual Backflow Preventer
- Patented PRIER "triple seal" positive shutoff system offers triple redundancy to assure shutoff
- High flow rate, 16 gallons per minute at 25 PSI differential
- Tested to 250,000 cycles; designed to last the life of the plumbing system

Certifications

- ASSE 1052
- ASSE 1019-B
- C-UPC
- ASME A112.18.1
- ASME B1.20.1
- CSA B125.1-12

PART NUMBER

Wall Hydrant Only

C-634N10

Hose Thread Outlet

4- 3/4" Garden Hose

6- 1" Hose

Inlet

N- 1" MPT x 3/4" FPT

P- 1" Male SWT x 3/4" Female SWT

V- 3/4" Copper-Press Fitting Ready

Length

04- 4" Insertion

06- 6" Insertion

08- 8" Insertion

10- 10" Insertion

12- 12" Insertion

14- 14" Insertion

16- 16" Insertion

18- 18" Insertion

20- 20" Insertion

22- 22" Insertion

24- 24" Insertion

XX- Special Size

Optional Hydrant Box

C-634BX1



BX1

BX2



BX3



RB1

Box Finish

BX1- Satin Nickel Plated

BX2- Rough Brass

BX3- Aluminum

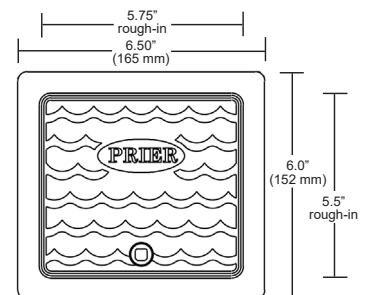
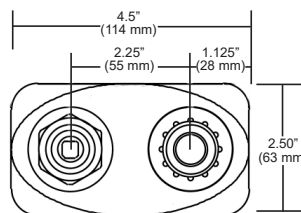
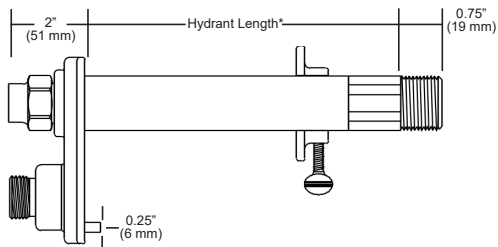
RB1- Round Box (Satin Nickel Plated)

C-634 Gasket

Included with all C-634 hydrant boxes



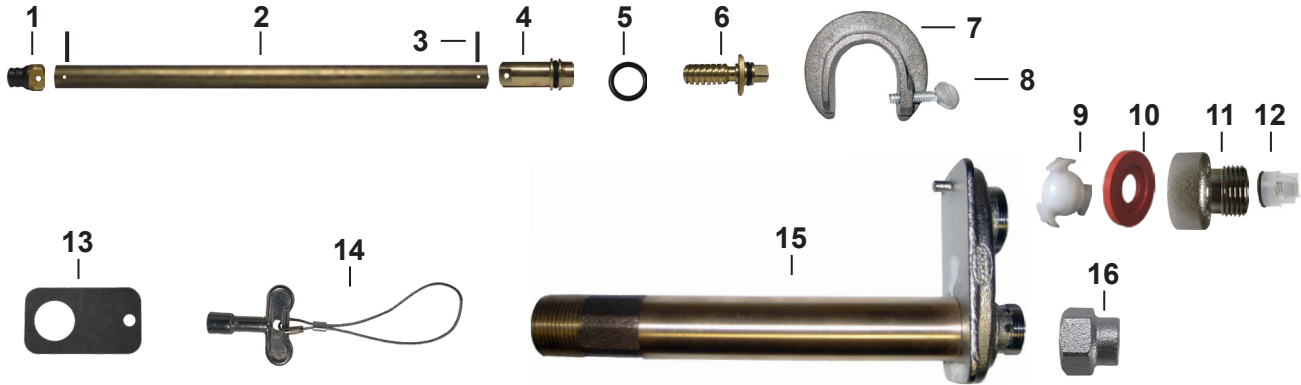
DIMENSIONS





SUBMITTAL FORM C-634 Heavy Commercial Wall Hydrant

■ MATERIALS



ID	PART	MATERIAL	ID	PART	MATERIAL
1	Stopper	Brass and Rubber	9	Check Spider	Acetal
2	Stem	Brass	10	Washer	Silicone
3	Stopper Pin	Stainless Steel	11	Hose Piece	Brass
4	Worm Sleeve	Brass	12	Check Valve	Composite
5	O-Ring	EPDM	13	Gasket	XPLE
6	Worm Drive	Brass	14	Loose Key	Zinc
7	Wall Clamping Ring	Cast Iron	15	Body	Brass
8	Thumb Screw	Steel	16	Valve Stem Cap	Brass

■ SPECIFICATIONS

Furnish and install Model C-634 Heavy Commercial Wall Hydrant manufactured by PRIER Products, Inc. Hydrant shall be surface mount and installed through 1 3/8" round opening. Hydrant shall have automatic draining capabilities with integral vacuum breaker/double backflow preventor. Hydrant shall flow 16 gallons per minute minimum at 25 PSI Differential and be at full flow in 2 handle rotations. Hydrant shaft shall be brass with connections. Hydrant shall have 3/4" or 1" (choose one) hose connection with freezeless water flow and self-draining functions, one piece valve plunger, satin nickel finish, brass operating rod with positive triple seal shutoff mechanism. Hydrant shall be approved under ASSE 1052 standard. Operating key & wall clamping ring to be furnished with each hydrant. Hydrant insertion length to be x inches. (Length minimum of 4" to choice length in 2" increments.)

Optional: Furnish and install flush-mount hydrant box for each valve. Hydrant box shall be manufactured of solid cast brass or aluminum with a rough brass, satin nickel plated brass or aluminum (choose one) finish. Box shape may be round or square and round box only comes with satin nickel finish. Box may be installed separately and hydrant be insertable and removable from front of the box. Access to the hydrant box shall be provided by the same operating key as the valve. A gasket shall be installed between the box and hydrant to prevent water intrusion into the structure.